



2609/438 Victoria Avenue Chatswood, NSW

 2
  2
  1

Panoramic view with spacious internal living

Designed in a striking contemporary style, this large two-bedroom captures the iconic Sydney Skyline from every angle.

Located in the heart of Chatswood, right on top of Chatswood Interchange (train station), you are only minutes to Westfield, Chatswood Chase, restaurants, cafes, schools, parks and a stunning selection of shops.

We feature 5-Star resort-style facilities, including a 25m indoor pool, Spa and Gymnasium.

Home Features:

- Two double-sized bedrooms, all with Sydney skyline views

Contact agent

Type : Unit
Sold Date : Thursday, 23rd March 2023
Land : 116 m2
Building Size : 116 m2

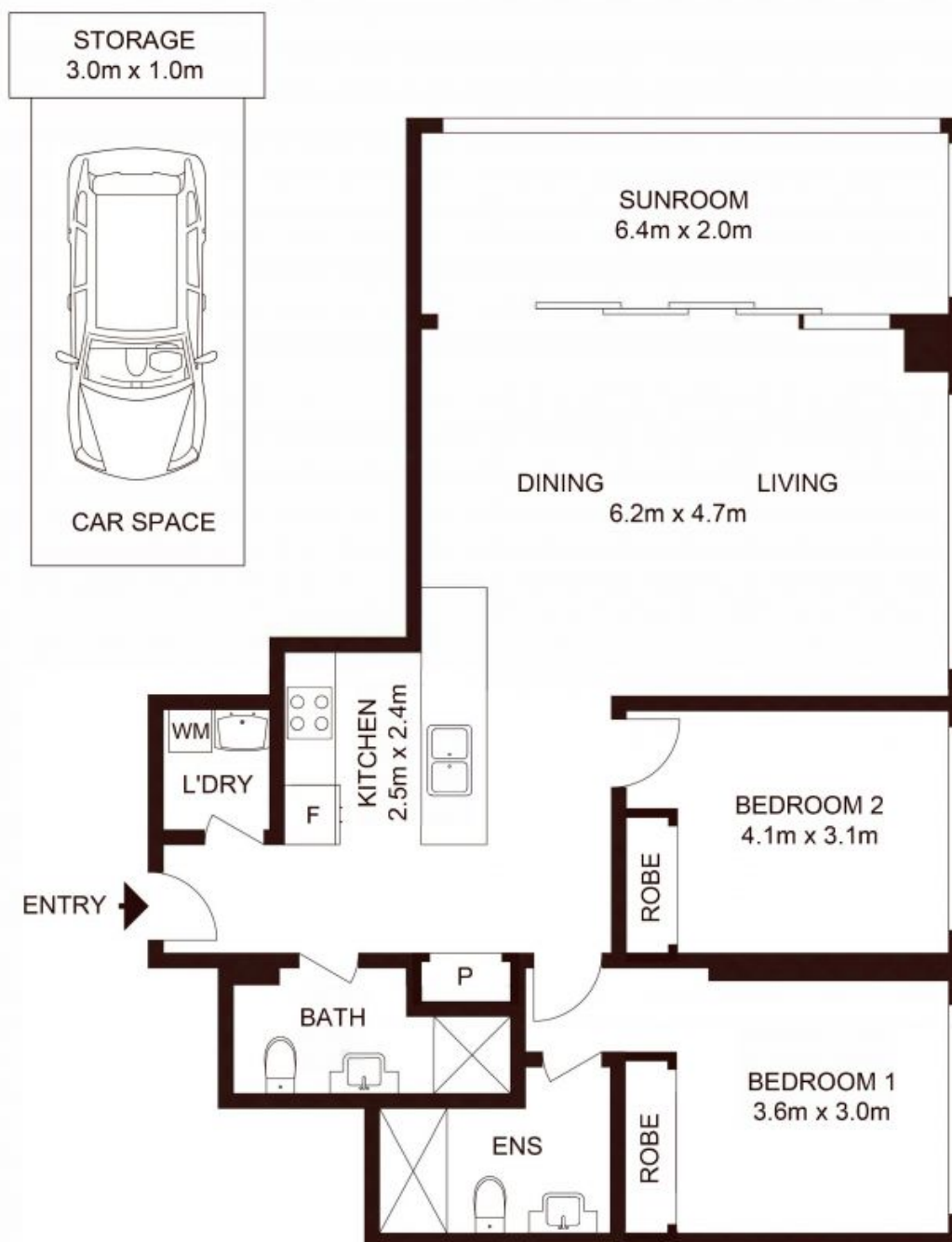
Council Rates : \$355.00 p/q
Water Rates : \$163.87 p/q
Strata Rates : \$2,200.00 p/q

Jeffrey Li

0404 135 763

Faye Dai

0423 677 160



Total Strata Area: 116 sqm
Total Living Area: 100 sqm

LEVEL 26

2609/438 Victoria Avenue, CHATSWOOD

Not to scale • All measurements are approximate • Drawn for marketing purposes only • Floorplan by © Xorix Media

