



1208/500 Pacific Highway St Leonards, NSW



1



1

Tranquil oasis hideaway in dynamic location

Spectacular one bedroom apartment boasting flawless design and convenience, set within "The Landmark", a prominent Northshore landmark building boasting an unsurpassed location epitomizing harborside living and comfort.

Apartment features:

- Generous and fluid living/dining areas plus a built-in study space
- Living room flows to the east, allowing an abundance of light
- Stone-topped gas kitchen with quality integrated European appliances
- Timber floors throughout; internal laundry; ducted AC
- Lift access to a separate storage

Residence Features:

\$858000

Type : Apartment

Sold Date : Friday, 21st April 2023

Land : 67 m2

Building Size : 67 m2

Council Rates : \$359.00 p/q

Water Rates : \$160.18 p/q

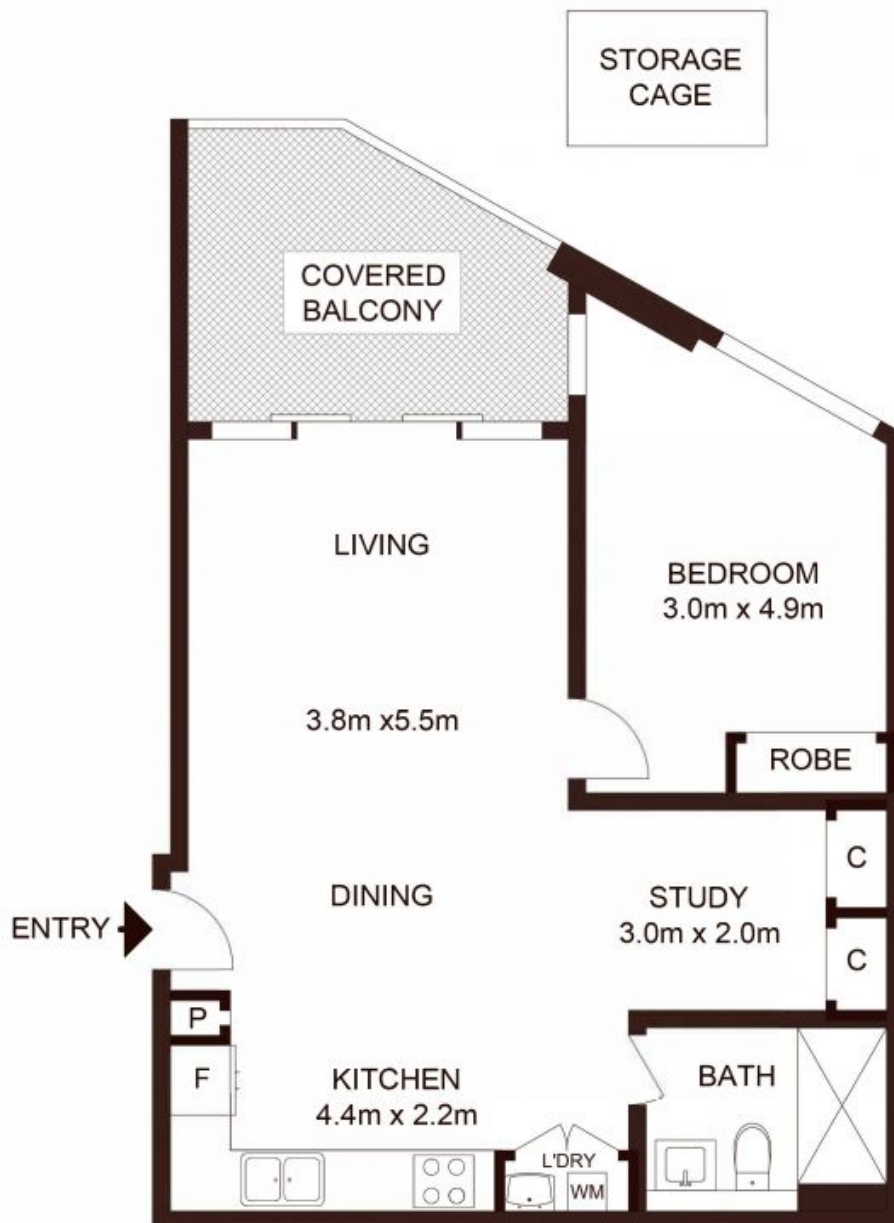
Strata Rates : \$901.80 p/q

Jeffrey Li

0404 135 763

Jeffrey Li

0404 135 763



LEVEL 12

Total Strata Area: 67sqm
Total living area: 65sqm

1208/500 Pacific Highway, ST LEONARDS

Not to scale • All measurements are approximate • Drawn for marketing purposes only • Floorplan by © Xorix Media

