


2802/500 Pacific Highway St Leonards, NSW

 2
  2
  1

Double Storey Sky Home in Prestige St Leonards Landmark - One of a kind!

This spectacular 2.5 bedroom is situated on two levels with separate balconies boasting flawless design and convenience.

Apartment Highlights:

- * Enjoy a harmonious connection with the height and mesmerizing north-facing vistas towards Northhead and across to the Lower North Shore.
- * Expansive, open-plan living and dining with custom entire wall built-in cabinetry on both levels opening out to a substantial, covered north-facing balcony.
- * The apartment also features double levels with two balconies and offers great spaces to relax and have outdoor entertaining.
- * Luxury hot/cold filtered zip water tap on two levels

\$2,100,000

Type : Apartment

Sold Date : Tuesday, 11th April 2023

Council Rates : \$359.00 p/q

Water Rates : \$156.70 p/q

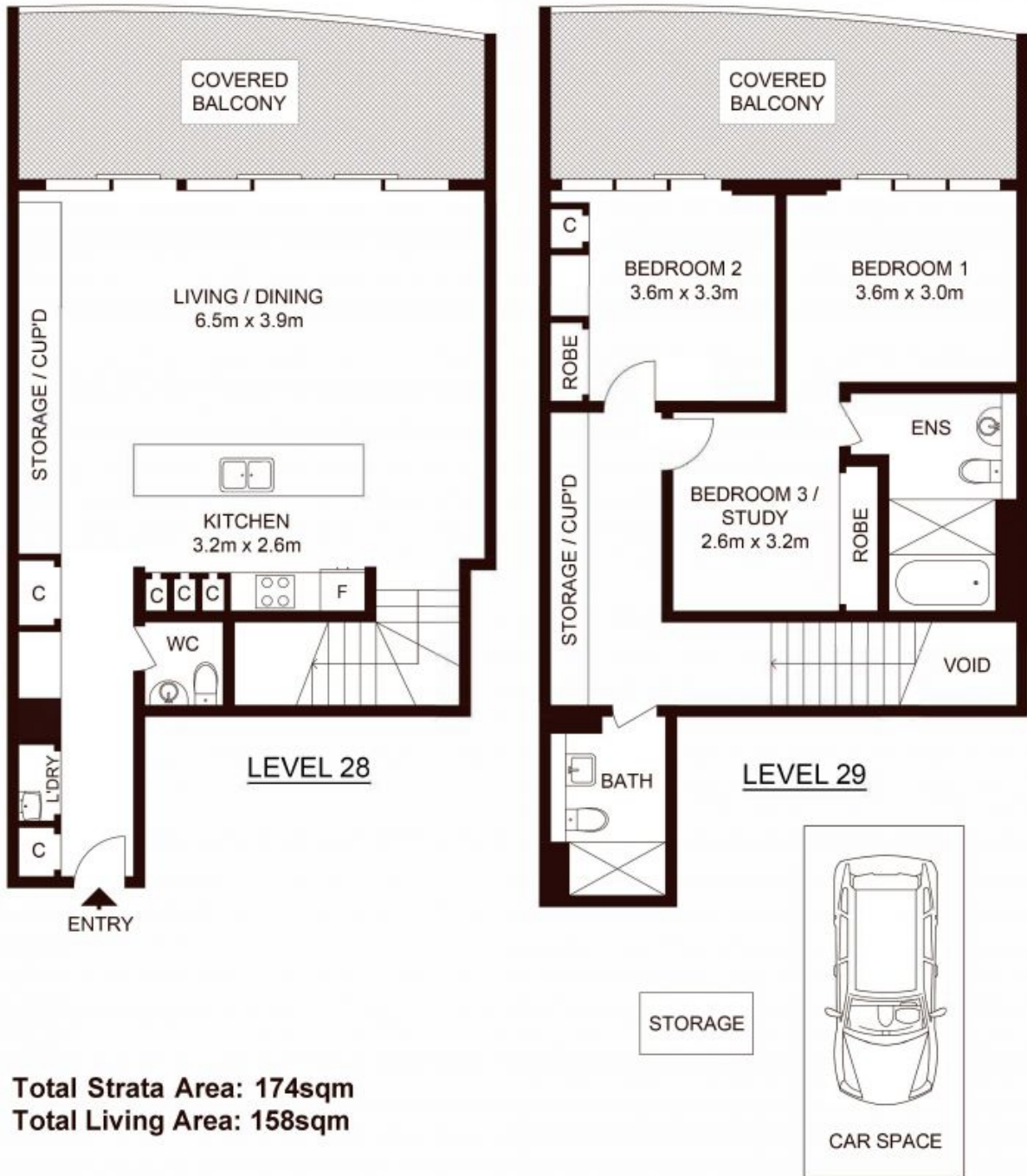
Strata Rates : \$2,348.95 p/q

Jeffrey Li

0404 135 763

Jeffrey Li

0404 135 763



Total Strata Area: 174sqm
Total Living Area: 158sqm

2802/500 Pacific Highway, ST LEONARDS

Not to scale • All measurements are approximate • Drawn for marketing purposes only • Floorplan by © Xorix Media

