



1194/1 Steam Mill Lane Haymarket, NSW



Executive Apartment with parking IN DARLING SQUARE

Located in one of the most prestigious location, Darling Square brings you through a colourful urban village. A part of bold new Sydney, Darling Square had been acquired to bring in new design and entertainment.

Minutes of walk to the cultural embodied Haymarket, bustling Westfield Tower & Iconic Opera House, this is a place of one of the most walk-able and connected new city neighbourhoods.

Features include:

- ? Study area
- ? Large open plan living and dining area
- ? Modern kitchen with gas cooktop
- ? Immaculate modern bathroom

\$1200 pw

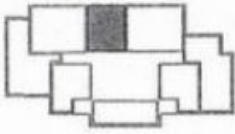
Type : Apartment

Date Available : Monday, 20th February 2023

Land : 78 m2

Tiffany Or

0455582288



LAYOUT PLAN

apartment type	C
apartment no.	6C, 7C, 8C, 9C, 10C, 11C, 12C, 13C, 14C, 15C, 16C, 17C, 18C, 19C, 20C, 21C, 22C, 23C
bedrooms	1
apartment area	49 sqm
balcony area	13 sqm
total apartment area	62 sqm

These are typical floor plans only, as at February 2011. All areas, dimensions and specifications shown are approximate and are subject to survey on completion of construction. They may also be subject to change without notice if required for compliance with planning and building regulations in other areas. Prospective purchasers are encouraged to make their own measurements and seek their own professional advice.

