



3001/500 Pacific Highway St Leonards, NSW

 2
  2
  1

Spacious, Sunny and Luxurious in desirable 'Landmark' St Leonards

This generously-sized two-bedroom apartment is situated on the 30th floor at a prime corner position that incorporates a North-facing aspect with open-plan living leading out onto a massive entertainer balcony, enjoying a spectacular sunrise and sunset view.

Home Features:

- North facing Open plan living and dining area with access to the balcony
- Wrap around balcony in perfect corner position overlooking beautiful district views of Sydney Heads and sea
- Luxury Miele brand kitchen appliances including built-in fridge

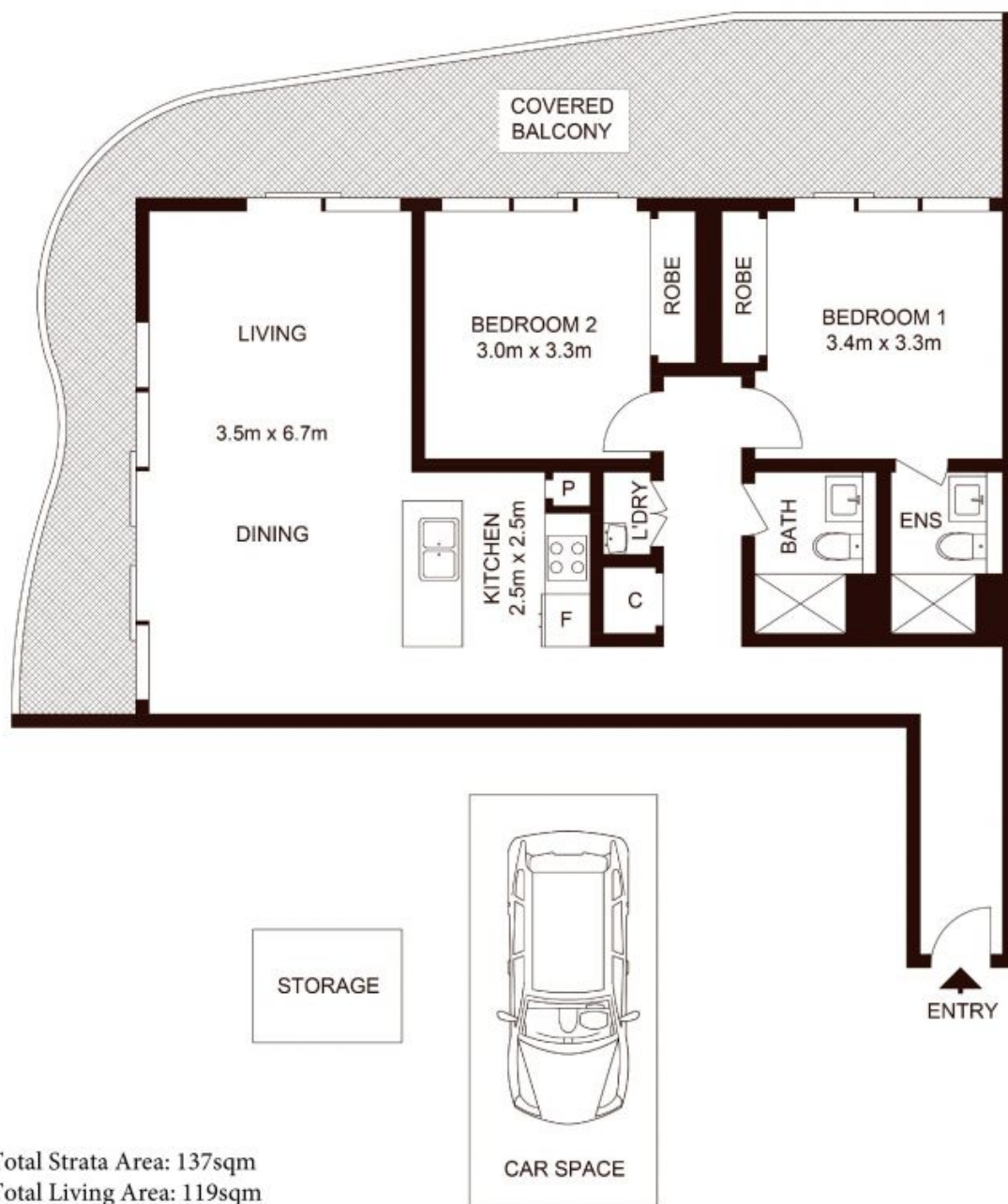
Enjoy close proximity to excellent public and private schools, retail and shopping ameniti

Deposit taken \$1250 per week!

Type : Apartment
Date Available : Friday, 24th March 2023
Land : 137 m2
Building Size : 119 m2

Li Guo
0420488278

Faye Dai
0423 677 160



3001/500 Pacific Highway, ST LEONARDS

Not to scale • All measurements are approximate • Drawn for marketing purposes only • Floorplan by © Xorix Media

