



3001/500 Pacific Highway St Leonards, NSW

 2  2  1

Spacious, Sunny and Luxurious in desirable 'Landmark' St Leonards

This generously-sized two-bedroom apartment is situated on the 30th floor at a prime corner position that incorporates a North-facing aspect with open-plan living leading out onto a massive entertainer balcony, enjoying a spectacular sunrise and sunset view.

Home Features:

- North facing Open plan living and dining area with access to the balcony
- Wrap around balcony in perfect corner position overlooking beautiful district views of Sydney Heads and sea
- Luxury Miele brand kitchen appliances including built-in fridge

Enjoy close proximity to excellent public and private schools, retail and shopping amenities

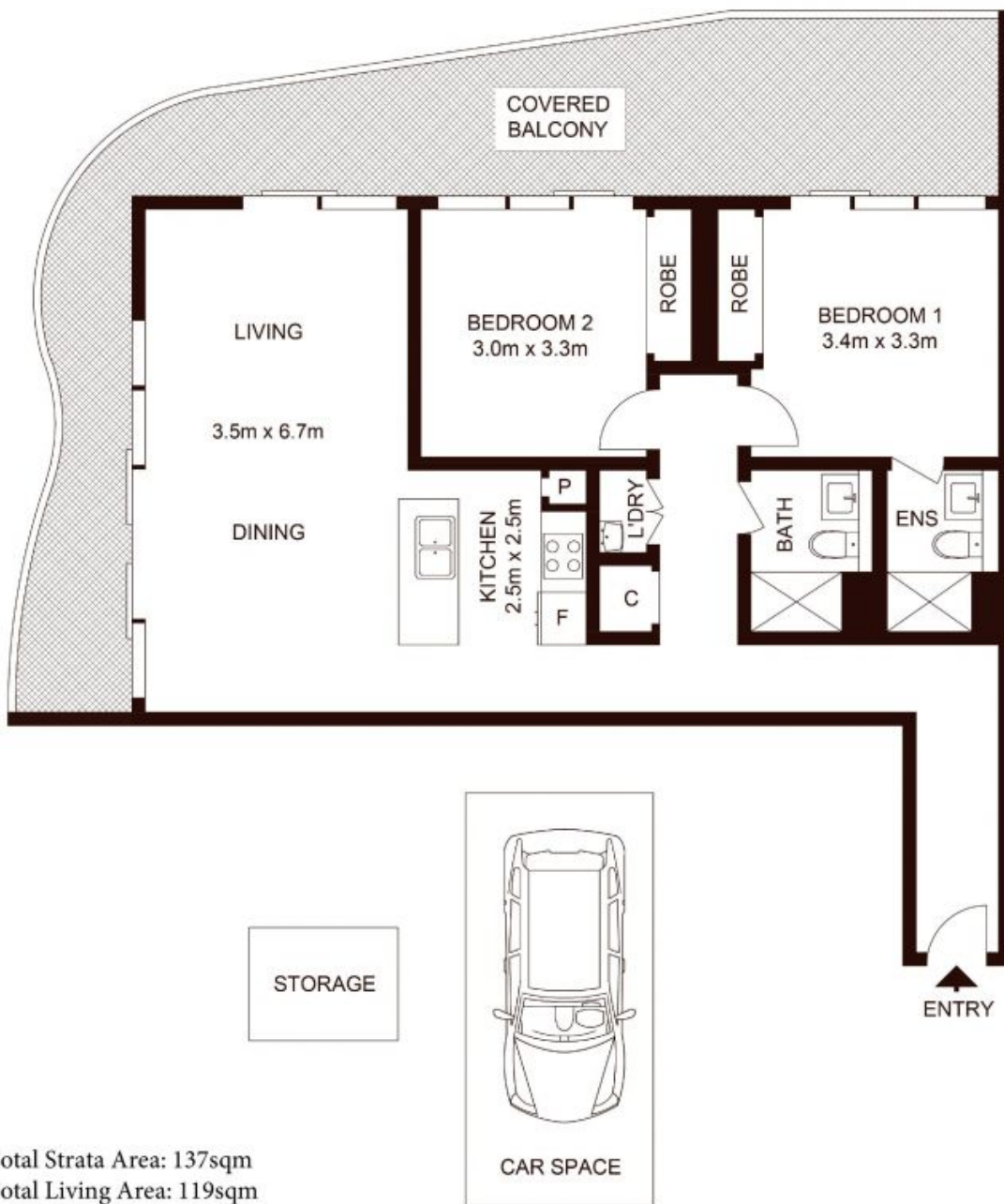
\$1,750,000

Type : Apartment
Sold Date : Thursday, 16th February 2023
Land : 137 m2
Building Size : 119 m2

Council Rates : \$359.00 p/q
Water Rates : \$160.18 p/q
Strata Rates : \$1,716.30 p/q

Jeffrey Li

0404 135 763



3001/500 Pacific Highway, ST LEONARDS

Not to scale • All measurements are approximate • Drawn for marketing purposes only • Floorplan by © Xorix Media

