



501/8 Duntroon Avenue St Leonards, NSW

 1  
  1  
  1

## Contemporary north facing park-side sanctuary

Spacious and impeccably appointed, this oversized one bedroom apartment rests within the popular 'Pavilions on the Park' building. Situated opposite the green expanse of Newlands Park, this apartment enjoys the relaxed greenery of Duntroon Avenue whilst being within close proximity to a multitude of dining, transport options and the RNSH medical precinct. Embracing a north east aspect within a secure low rise block, this stylish apartment delivers exceptional lifestyle convenience.

### Home Features:

- Spacious open plan living zone and dedicated dining enclave
- Living flows to sheltered balcony perfect for a morning coffee
- Modern Caesarstone kitchen, gas cooking, quality appliances
- Generously sized bedroom with large built-ins

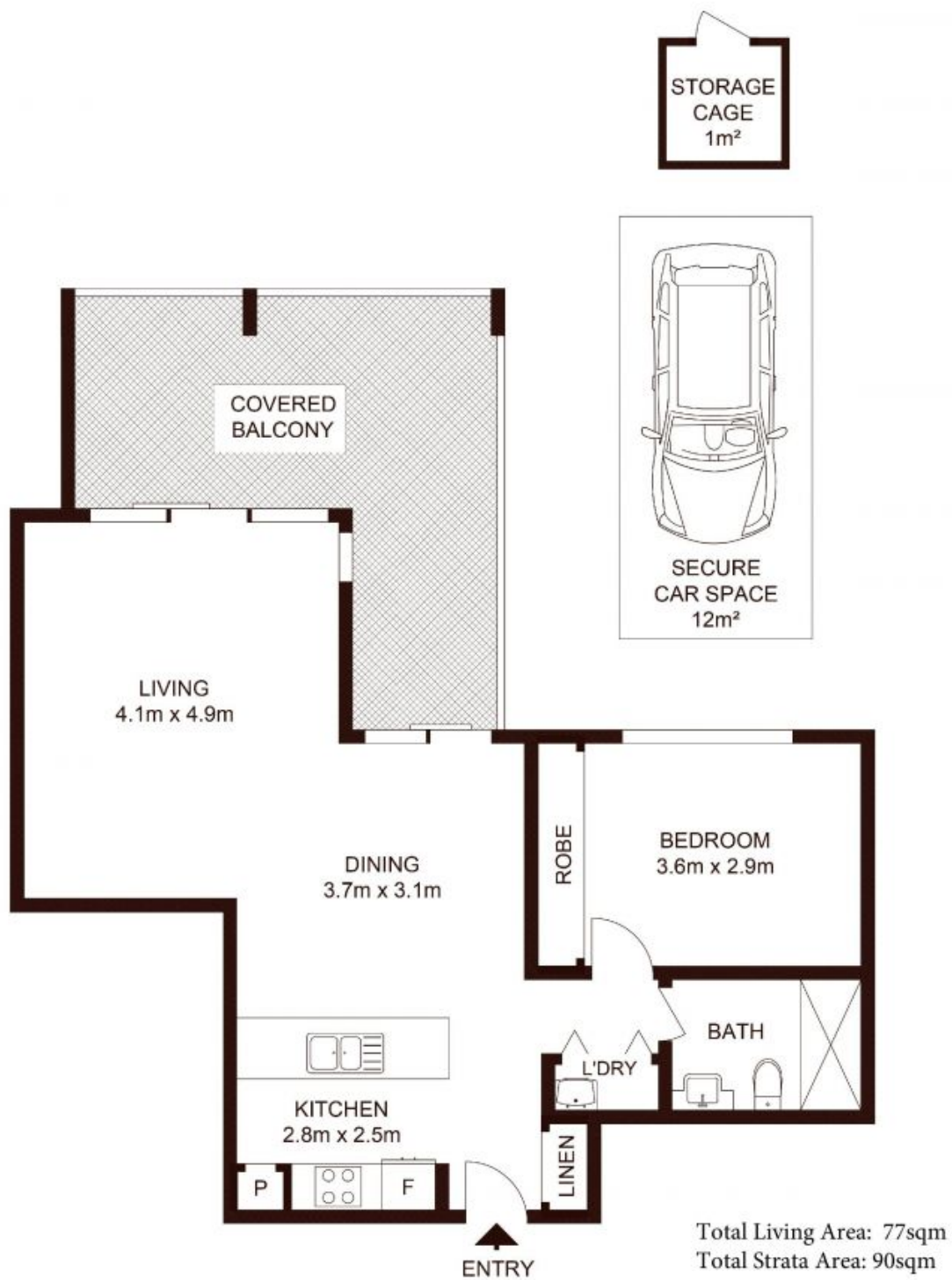
**\$785,000**

**Type** : Apartment  
**Sold Date** : Thursday, 2nd March 2023  
**Land** : 90 m2

**Council Rates** : \$359.00 p/q  
**Water Rates** : \$165.85 p/q  
**Strata Rates** : \$1,182.23 p/q

**Jeffrey Li**  
0404 135 763

**Faye Dai**  
0423 677 160



## 501/8 Duntroon Avenue, ST LEONARDS

Not to scale • All measurements are approximate • Drawn for marketing purposes only • Floorplan by © Xorix Media

