



1805/301 Botany Road Zetland, NSW



2



2



1

Luxury Apartment above Green Square Station 2 Bedroom

A landmark development within the new Green Square Town Centre.

Designed by award-winning architect Koichi Takada above a large expanse of bustling retail and restaurant space, Infinity by Crown Group will set the benchmark for urban living and become the landmark gateway to Sydney's newest vibrant precinct.

Improved public transport access forms part of the design, with the extension of an underground pedestrian walkway and construction of a new wheelchair access lift linking Botany Road's public plaza with Green Square train station.

Features include:

- Generously Sized 2 Bedroom apartment with built-in wardrobes

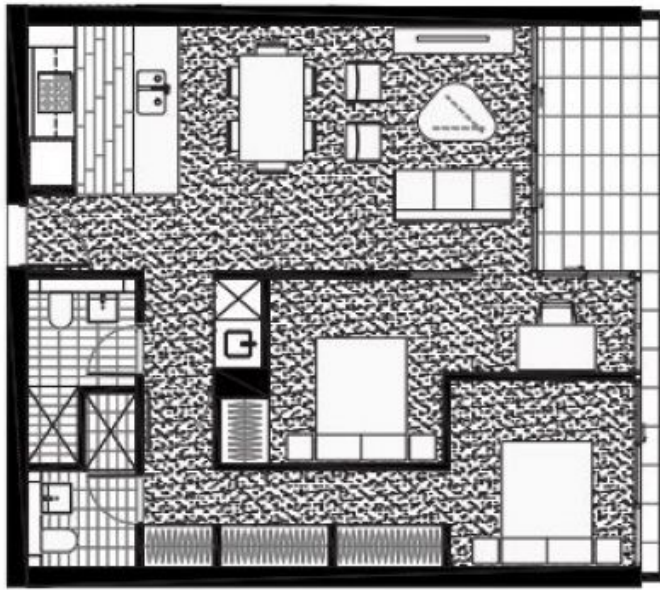
LEASED pw

Type : Apartment

Date Available : Saturday, 25th February 2023

Jenny Chan Chan

0420488278



301-303 Botany Road, Green Square

INTERNAL	77 m ²
EXTERNAL	10 m ²
TOTAL	87 m ²

