



2003/472 Pacific Highway St Leonards, NSW

 2
  2
  1

Harbour Bridge views and resort-style living in a luxury building - Built by Mir

With sweeping city views that claim the Harbour Bridge as its centerpiece, this apartment promises a lifestyle of sophistication in the resort-style 'St Leonards Square' building. Pure indulgence is on offer with floor-to-ceiling windows, a versatile floorplan, and sweeping views of Sydney Harbour and its surroundings.

Home Features:

- Floor-to-ceiling glass windows with dazzling day/night views
- Two storage cages one in the car park basement and another one conveniently located on level 20 residential level
- Modern island kitchen with stone benchtop and built-in Miele appliances

There are 29 visitor spaces, 14 car share spaces, and 18 electronic car charging bays. Res

\$1935000

Type : Apartment
Sold Date : Monday, 6th February 2023

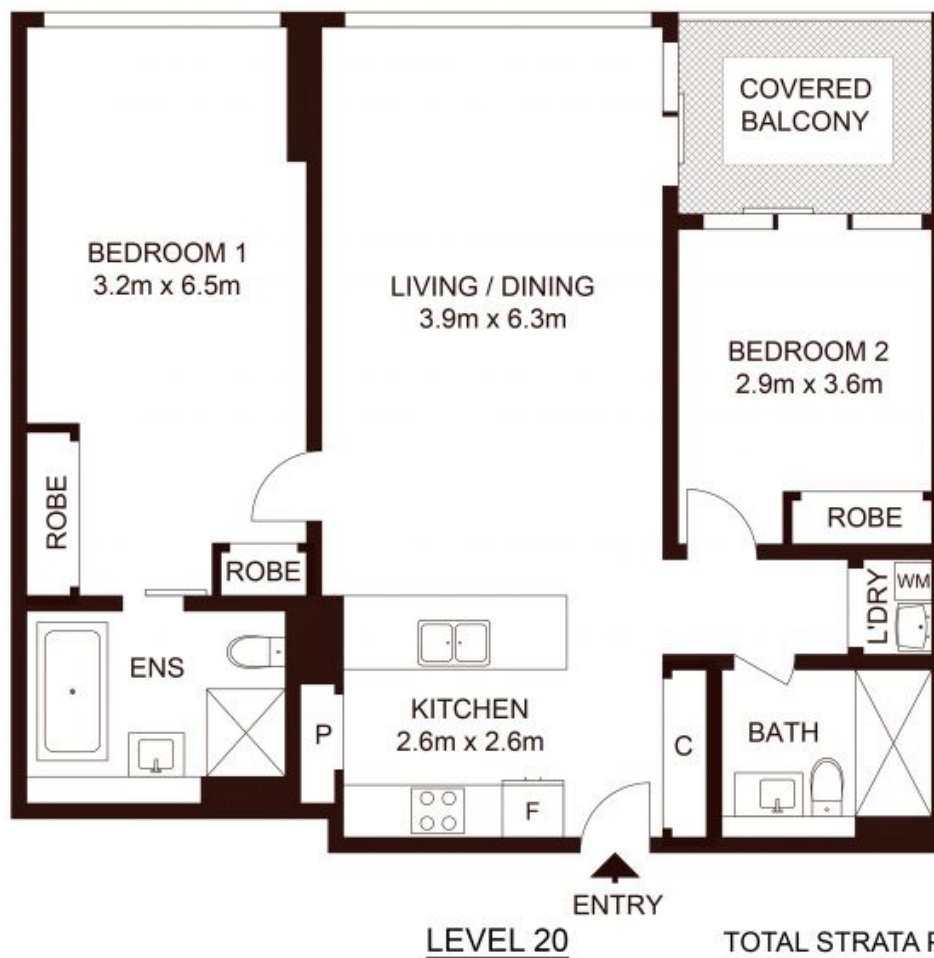
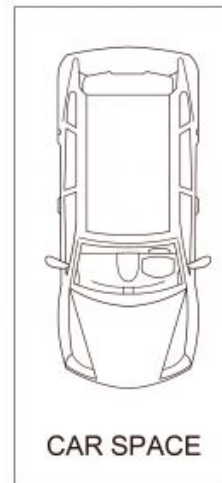
Council Rates : \$359.00 p/q
Water Rates : \$160.18 p/q
Strata Rates : \$1,870.07 p/q

Jeffrey Li

0404 135 763

BASEMENT
STORAGE

EXTRA STORAGE
ON RESIDENTIAL
LEVEL



TOTAL STRATA PLAN : 108m²
TOTAL LIVING AREA : 90m²

2003/472 Pacific Highway, ST LEONARDS

Not to scale • All measurements are approximate • Drawn for marketing purposes only • Floorplan by © Xorix Media

