




5608/500 Pacific Highway St Leonards, NSW

 3
  3
  2

?Simply Stunning? Absolute sky High Sub-Pent Apartment offers huge One Level Liv

Positioned sky high on level 56, this sub-penthouse three bedroom residence commands showstopping views stretching from the Sydney harbour bridge all the way to the blue mountains. This residence offers house-like proportions with a total area over 200sqm. Experience an elevated way of life amidst unrivalled elegance. This spacious apartment is ideal for entertaining, exquisitely appointed, and artfully angled to capitalise on the sensational views.

Home Features:

- * Enormous space of living and entertaining -200sqm
- * One of the only four levels in the South-west corner of this complex with 270c views
- * Miele induction cooktop, 90cm oven, integrated fridge and dishwasher

Contact Agent

Type : Apartment
Sold Date : Tuesday, 7th November 2023
Land : 150 m2
Building Size : 150 m2

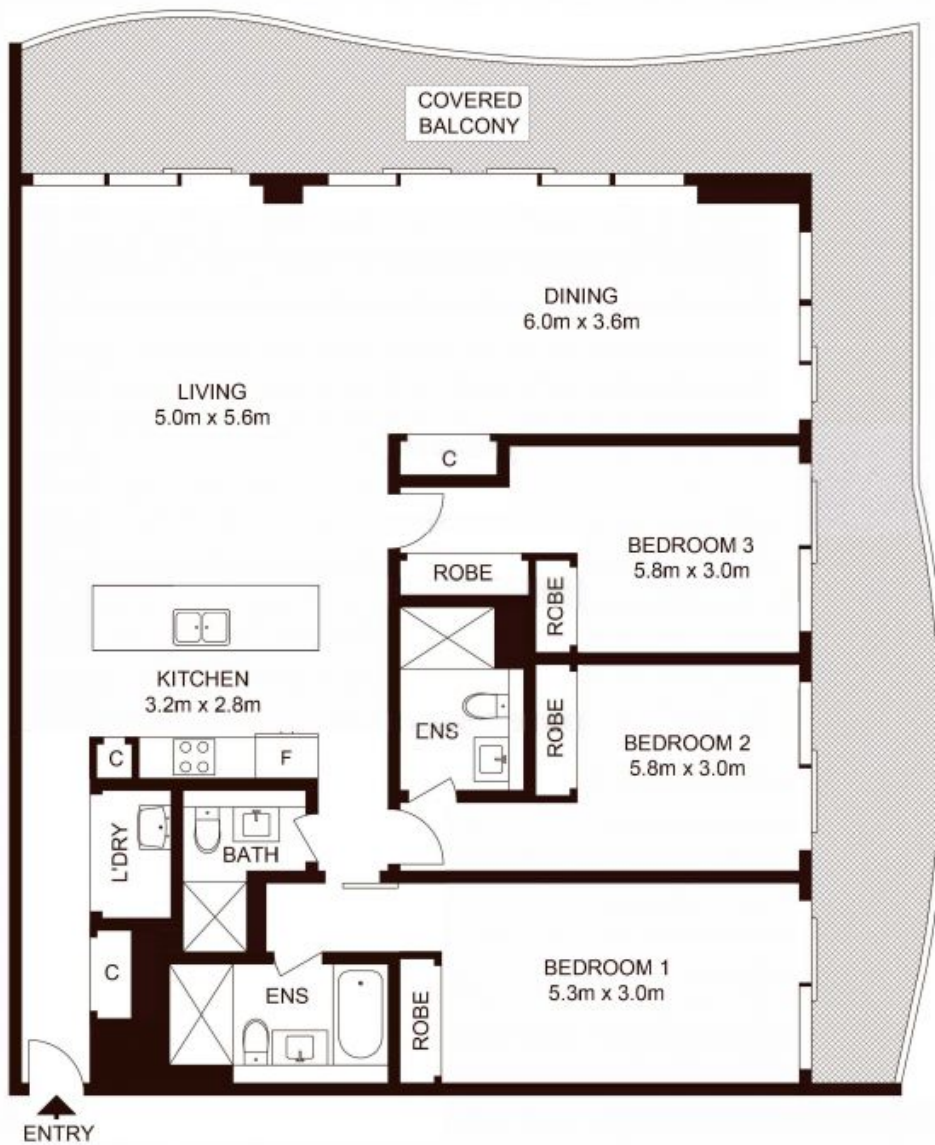
Council Rates : \$359.00 p/q
Water Rates : \$160.18 p/q
Strata Rates : \$4,339.00 p/q

Jeffrey Li

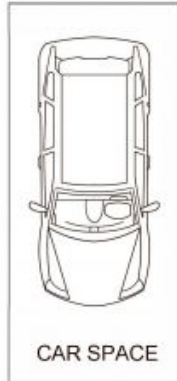
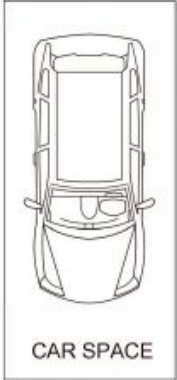
0404 135 763

Faye Dai

0423 677 160



STORAGE



Total living area: 200 sqm
 Total strata area: 235 sqm

5608/500 Pacific Highway, ST LEONARDS

Not to scale • All measurements are approximate • Drawn for marketing purposes only • Floorplan by © Xorix Media

