

911/500 Pacific Highway St Leonards, NSW

 2
  2
  1

Deposit taken!! NO more inspection!

EXPERIENCE THE LANDMARK - huge Master & 2nd

This is a 105sq internal area two bedroom and if you are looking for a big master bedroom in this building this is it- fully furnished

A new Lifestyle, over 1,000m2 of amenities designed to enhance your living.

Luxurious residences with expansive entertaining spaces offering spectacular views stretching from Sydney Harbour across the North Shore to Middle Harbour.

Club 500, residents will enjoy an array of resort-style services and amenities.

? Lap pool

? Virtual Golf Range with 3 tournament virtual systems, equipped with lounge setting and b

Deposit taken!!

Type : Apartment

Date Available : Saturday, 28th January 2023

Building Size : 105 m2

Tiffany Or

0455582288

Tiffany Or

0455582288

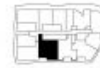


F Fridge
L Laundry
P Pantry
ST Storage
W Wardrobe

Apartment Type 2 Bedrooms - Media Room
Bathrooms 2
Internal 105 sq m
External 17 sq m
Parking 1

THE
LANDMARK

Sculpted from Sydney



Two Bed Apartment
Type H - DDA

Disclaimer: Colliers International does not guarantee, warrant or represent that the information contained in this advertising and marketing document is correct. Any interested parties should make their own enquiries as to the accuracy of this information. We exclude all implied or implied terms, conditions and warranties arising out of this document and any liability for loss or damage arising there from.