

809/500 Pacific Highway St Leonards, NSW



one bed plus extra study bedroom. Luxury Apartment in Prestige Landmark - with U

This near new apartment provides a unique living experience and is just footsteps from St Leonards Plaza and the new Crows Nest Metro. Set on level eight of the luxury 'Landmark' development, this home is flooded with natural light. It is a delightful entertainers' retreat or a place to relax in the sunshine.

Home Features:

- Open plan living and dining area with access to the balcony
- upgraded Herringbone timber floor throughout the apartment
- Upgraded marble kitchen bench including splashback
- upgraded smart lock access

\$900 Per Week DEPOSIT TAKEN!

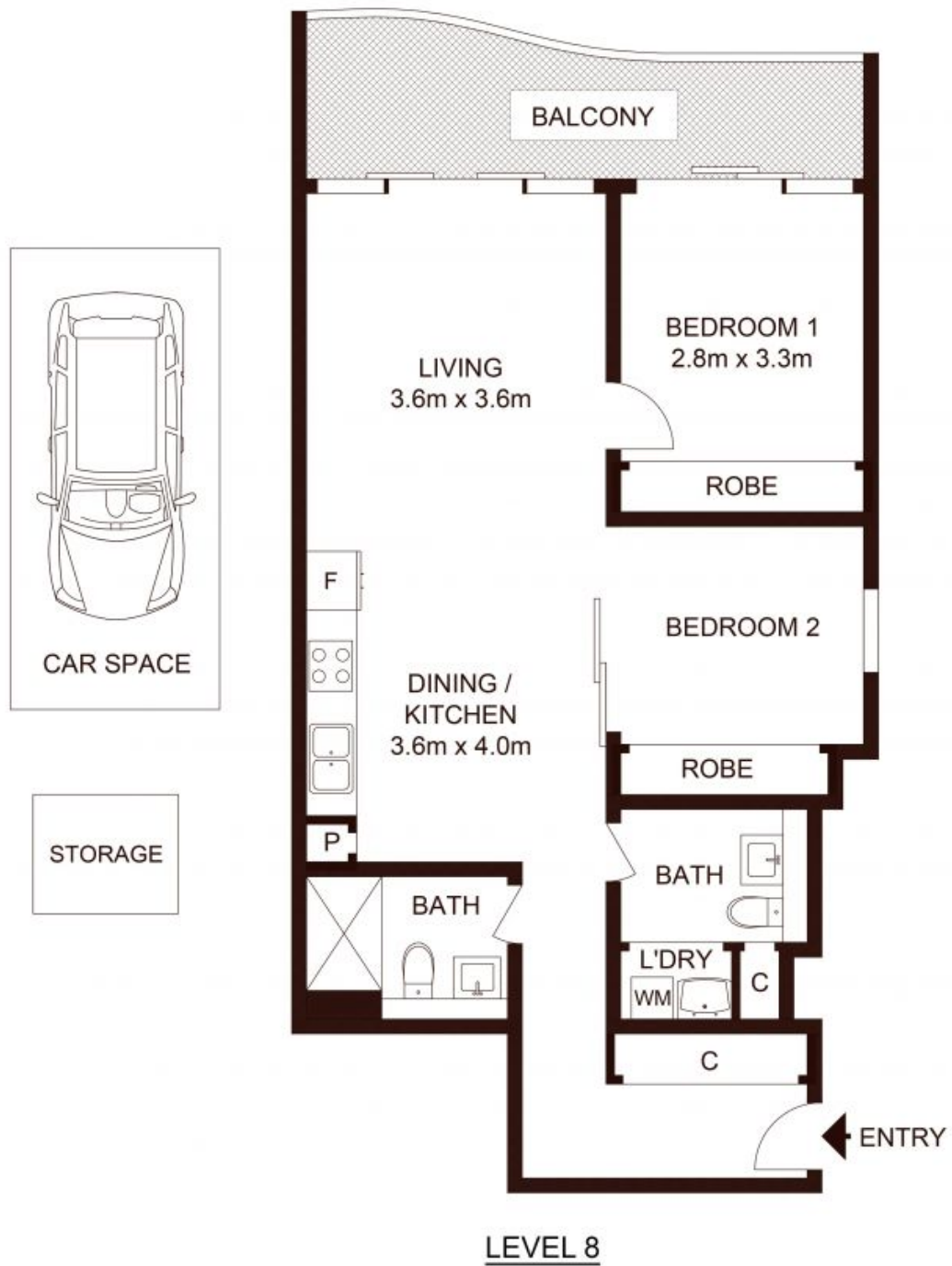
Type	: Apartment
Date Available	: Tuesday, 24th January 2023
Land	: 94 m2
Building Size	: 94 m2
Bond	: \$3,600.00

Jeffrey Li

0404 135 763

Faye Dai

0423 677 160



TOTAL LIVING AREA : 78m²
TOTAL STRATA AREA: 94m²

809/500 Pacific Highway, ST LEONARDS

Not to scale • All measurements are approximate • Drawn for marketing purposes only • Floorplan by © Xorix Media

