






5105/500 Pacific Highway St Leonards, NSW

 3
  3
  2

**A new Lifestyle with over 1,000m2 of amenities designed to enhance your living.**

Enormous (140sqm) 3-Bedroom Residence in The Heart of The Lower North Shore.

This 3-bed residence has been intelligently designed to provide abundant space & natural light, enhanced by expansive floor-to-ceiling glass.

**Apartment Features**

- \*NorthEast facing with uninterrupted harbour views.
- \*Huge wrap-around balcony
- \*Full Marble stone kitchen and bathroom
- \*Two ensuites and an extra 3rd bathroom
- \*Full Open plan living areas
- \*Spectacular views

**\$4200000**

**Type** : Apartment  
**Sold Date** : Monday, 7th November 2022  
**Land** : 140 m2  
**Building Size** : 140 m2

**Jeffrey Li**

0404 135 763

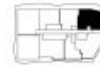


- F Fridge
- L Laundry
- P Pantry
- ST Storage
- W Wardrobe

Apartment Type	3 Bedrooms
Bathrooms	2
Internal	120 m <sup>2</sup>
External	37 m <sup>2</sup>
Parking	2

## THE LANDMARK

*Sculpted from Sydney*



### Three Bed Apartment Type E

Disclaimer: Colliers International does not guarantee, warrant or represent that the information contained in this advertising and marketing document is correct. Any interested parties should make their own enquiries as to the accuracy of this information. We exclude all implied or implied terms, conditions and warranties arising out of this document and any liability for loss or damage arising there from.