



1607/500 Pacific Highway St Leonards, NSW



Sundrenched North East facing two bedroom in a premier lifestyle location

unfurnished Brand New

This new built generously-sized two-bedroom apartment is situated on the 16th floor at a prime corner position that incorporates a north-east facing aspect with open-plan living leading out onto a massive entertainer balcony.

Home Features:

- Luxuriously appointed and finished to the highest standards
- Sun-drenched entertainment balcony
- Luxury kitchen with high-quality Miele appliances
- Generous bedrooms with built-in-robe

deposit taken!

Type : Apartment

Date Available : Monday, 7th November 2022

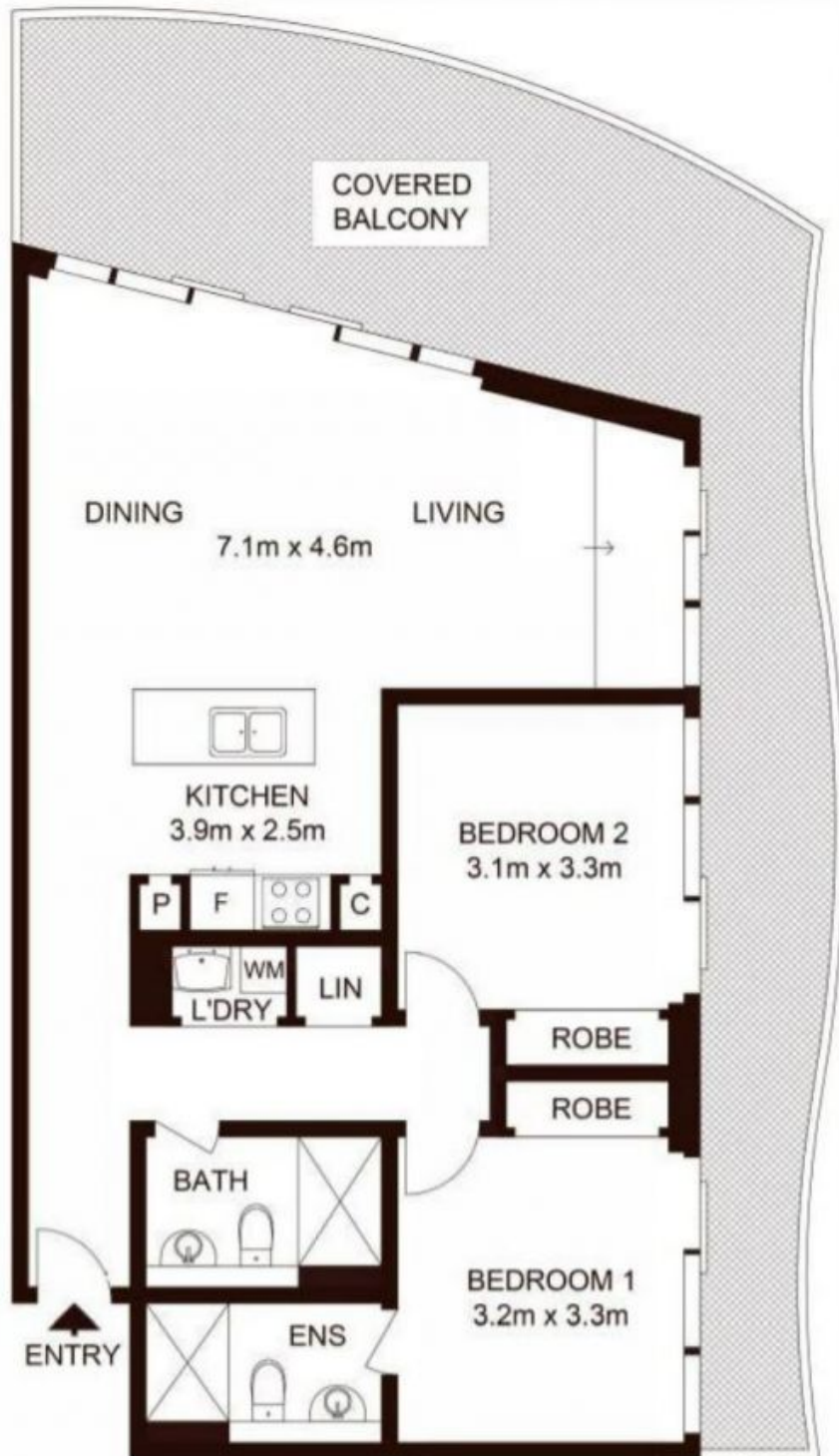
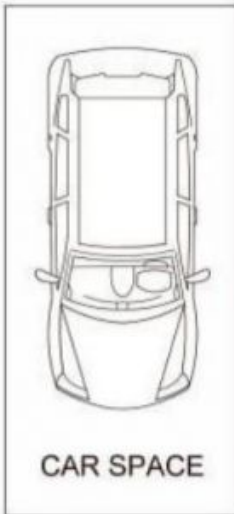
Tiffany Or

0455582288

Tiffany Or

0455582288

STORAGE



Total Strata Area: 143 sqm
Total Living Area: 123 sqm