



5/14 Talus Street Naremburn, NSW

 2
  2
  1

North facing hidden retreat in private cul-de-sac

Set amongst peaceful leafy surrounds, indulge in never-to-be-built-out district views and a private north aspect with this exceptional low-rise complex, perfectly positioned on the top floor.

Nestled within a parkside complex, with a reserve next door and Naremburn park stone's throw away, it savours the serenity of a leafy cul-de-sac address yet is only a stroll from St Leonards Station, Crows Nest and Naremburn Village.

Home features:

- Leafy outlook and easy flow to a lovely wraparound balcony
- Generous lounge and dining zone effortlessly flows outside
- Integrated stone kitchen has Miele gas stove and appliances

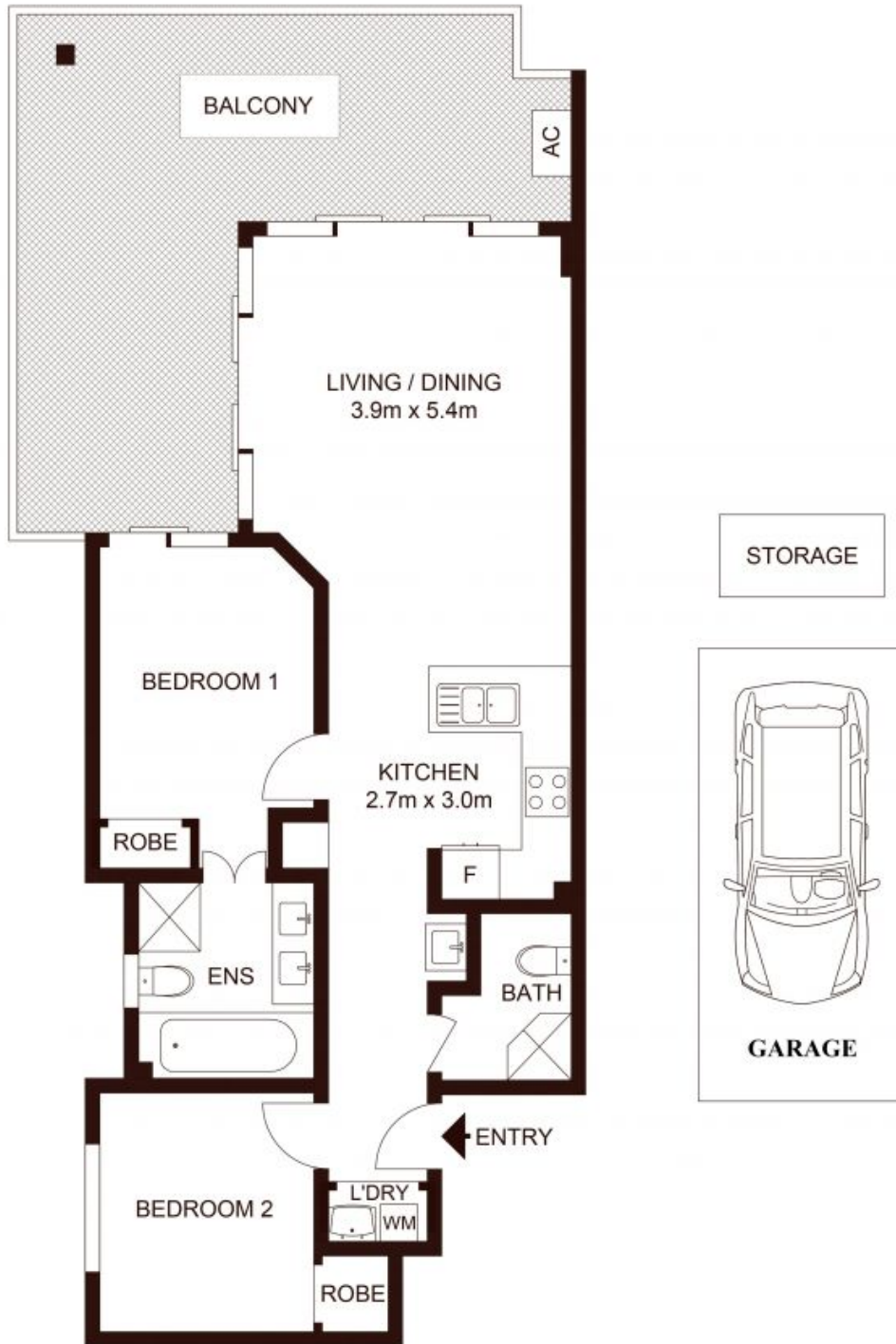
\$1080000

Type : Apartment
Sold Date : Tuesday, 28th March 2023
Land : 105 m2
Building Size : 105 m2

Council Rates : \$355.00 p/q
Water Rates : \$160.18 p/q
Strata Rates : \$1,281.25 p/q

Jeffrey Li

0404 135 763



TOP FLOOR

TOTAL STRATA AREA : 105m²
 TOTAL LIVING AREA : 85m²

5/14 Talus Street, NAREMBURN

Not to scale • All measurements are approximate • Drawn for marketing purposes only • Floorplan by © Xorix Media

