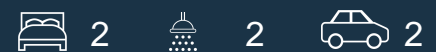




501/25 Marshall Avenue St Leonards, NSW



Perfect size luxury retreat in 'Embassy Residences' with two parking

Nestled on a quiet tree-lined Marshall Avenue surrounded by established homes, this designer two-bedroom apartment in the "Embassy Residence" enjoys the serenity of North Shore living with the convenience for which St Leonards is renowned.

Home Features:

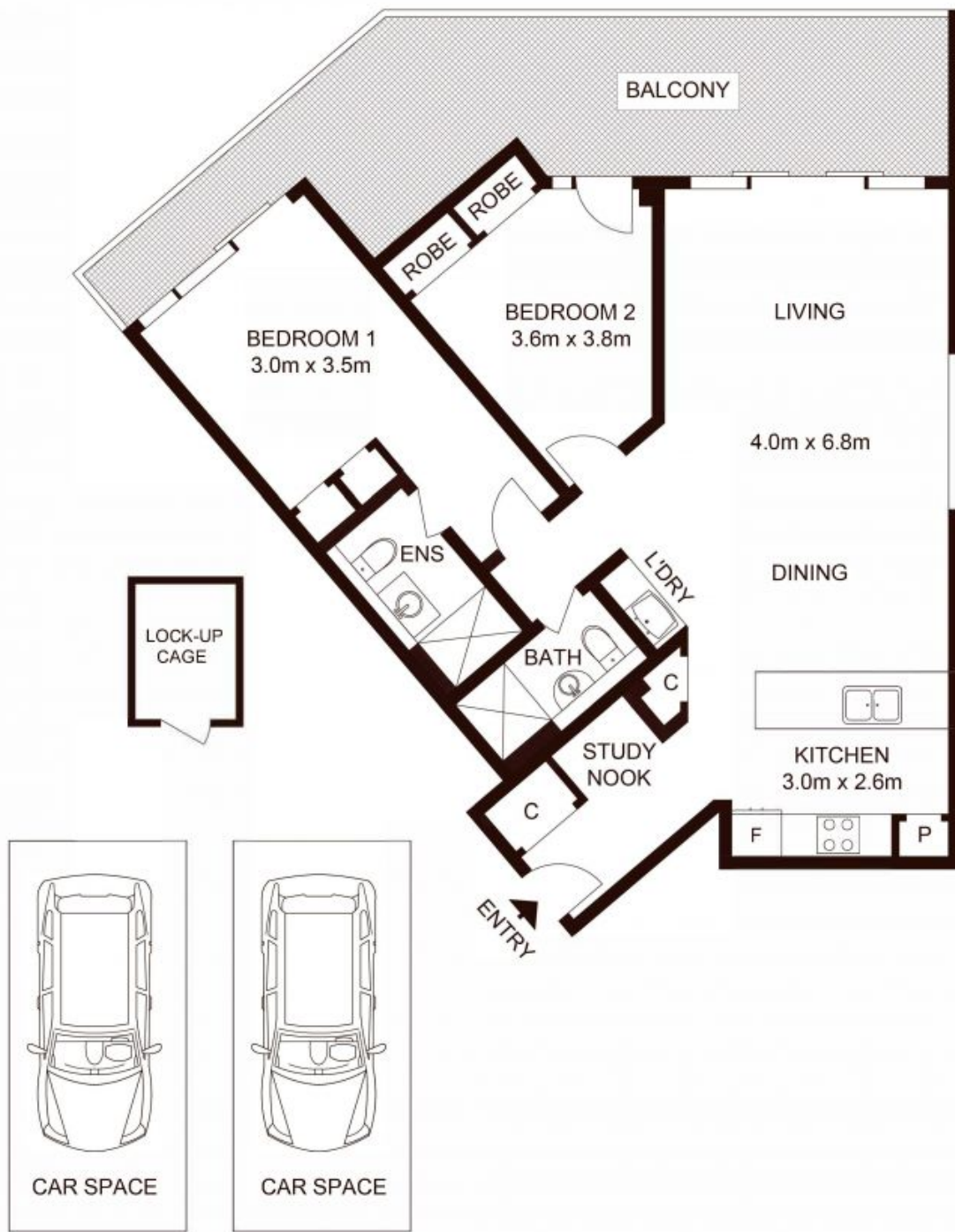
- Peacefully positioned within the boutique 'Embassy Residences'
- Expansive living and dining spaces provide open plan living
- Effortless flow to a large entertainers' terrace with elevated leafy views
- Premium stone island kitchen with quality Smeg integrated appliances

Type	: Apartment
Sold Date	: Friday, 11th November 2022
Land	: 137 m2
Building Size	: 137 m2

Council Rates	: \$359.00 p/q
Water Rates	: \$160.18 p/q
Strata Rates	: \$972.45 p/q

Jeffrey Li

0404 135 763



TOTAL STRATA AREA : 137m²
 TOTAL LIVING AREA : 108m²

501/25 Marshall Avenue, ST LEONARDS

Not to scale • All measurements are approximate • Drawn for marketing purposes only • Floorplan by © Xorix Media

