



801/500 Pacific Highway St Leonards, NSW

 2
  2
  1

North east facing Sleek contemporary living in a luxurious resort-style building

This generously-sized two-bedroom apartment is situated on the 8th floor at a prime corner position that incorporates a North-facing aspect with open-plan living leading out onto a massive entertainer balcony.

Apartment Features:

- * Open plan living and dining area with access to the balcony
- * Two spacious north-facing bedrooms with access to the wraparound balcony
- * Concierge service, secure lift access to parking & storage
- * Open-plan living and dining area with a generous ceiling height
- * Modern island kitchen with stone benchtop and built-in Miele appliances
- * Internal laundry with dryer included
- * Supermarket, shops, and offices are next door to the complex; comfortably enjoy daily li

Contact agent

Type : Apartment
Sold Date : Tuesday, 16th January 2024
Land : 144 m2
Building Size : 129 m2

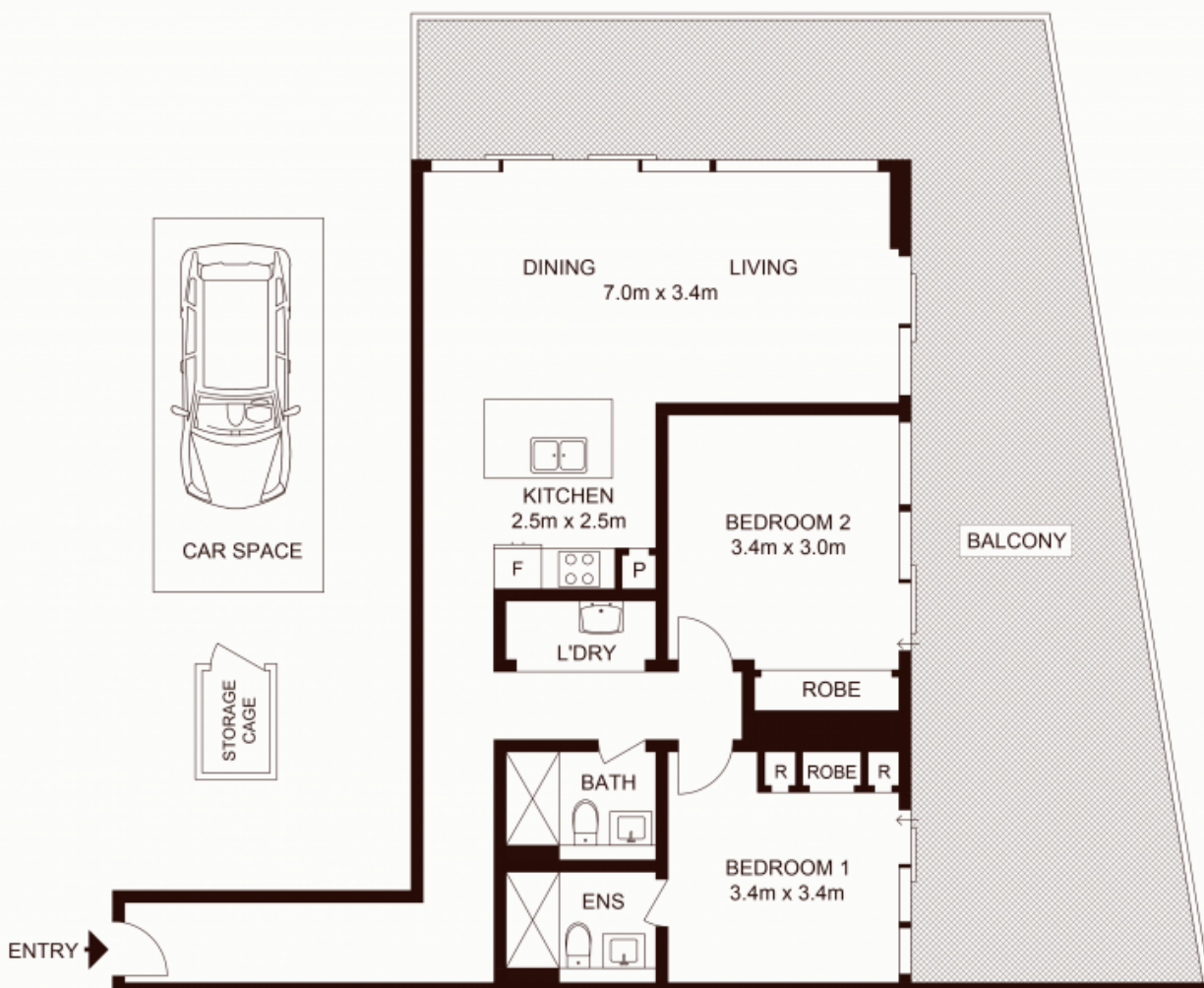
Council Rates : \$359.00 p/q
Water Rates : \$160.18 p/q
Strata Rates : \$1,651.65 p/q

Jeffrey Li

0404 135 763

Faye Dai

0423 677 160



TOTAL STRATA AREA : 144m²
TOTAL LIVING AREA : 129m²

801/500 Pacific Hallway, ST LEONARDS

Not to scale • All measurements are approximate • Drawn for marketing purposes only • Floorplan by © Xorix Media

