



1107/500 Pacific Highway St Leonards, NSW

 2
  2
  1

Sundrenched North East facing two bedroom in a premier lifestyle location

This near new built generously-sized two-bedroom apartment is situated on the 11th floor at a prime corner position that incorporates a north-east facing aspect with open-plan living leading out onto a massive entertainer balcony.

Home Features:

- Luxuriously appointed and finished to the highest standards
- Sun-drenched entertainment balcony
- Generous proportions featuring open plan living and dining areas with abundant natural light
- Luxury kitchen with high-quality Miele appliances
- Generous bedrooms with built-in-robe

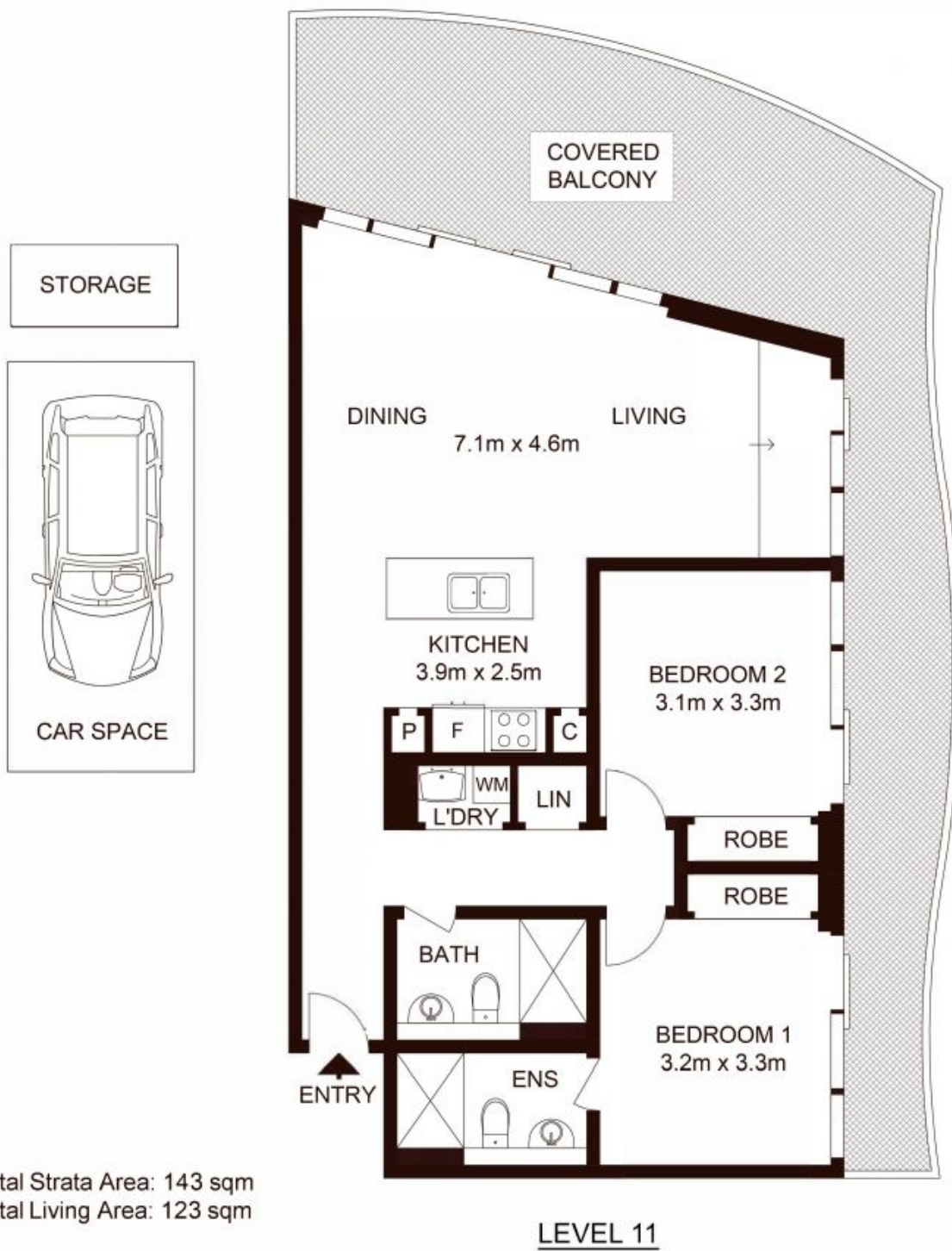
\$1,450,000

Type : Apartment
Sold Date : Monday, 23rd January 2023
Land : 143 m2
Building Size : 123 m2

Council Rates : \$359.00 p/q
Water Rates : \$160.18 p/q
Strata Rates : \$1,731.05 p/q

Jeffrey Li

0404 135 763



1 107/500 Pacific Highway, ST LEONARDS

Not to scale • All measurements are approximate • Drawn for marketing purposes only • Floorplan by © Xorix Media

