

2207/486 Pacific Highway St Leonards, NSW



Sleek contemporary living in a luxurious resort-style building

St Leonards Square exemplifies Mirvac's reputation for sophisticated living in Sydney with superb amenities, walking distance to rail, future Crows Nest Metro and a brand new St Leonards Shopping Plaza.

Home Features:

- ? Open plan kitchen, living/dining flow to covered balcony
- ? Stone bench tops and gas stainless steel Miele appliances
- ? Generous bedrooms with built-in robes, one with an ensuite
- ? Stylish fully tiled bathrooms
- ? Internal laundry, ducted air conditioning, security entrance
- ? Stroll to the heart of Crows Nest village eateries and nightlife

There are 29 visitor spaces, 14 car share spaces, and 18 electronic car charging bays. Res

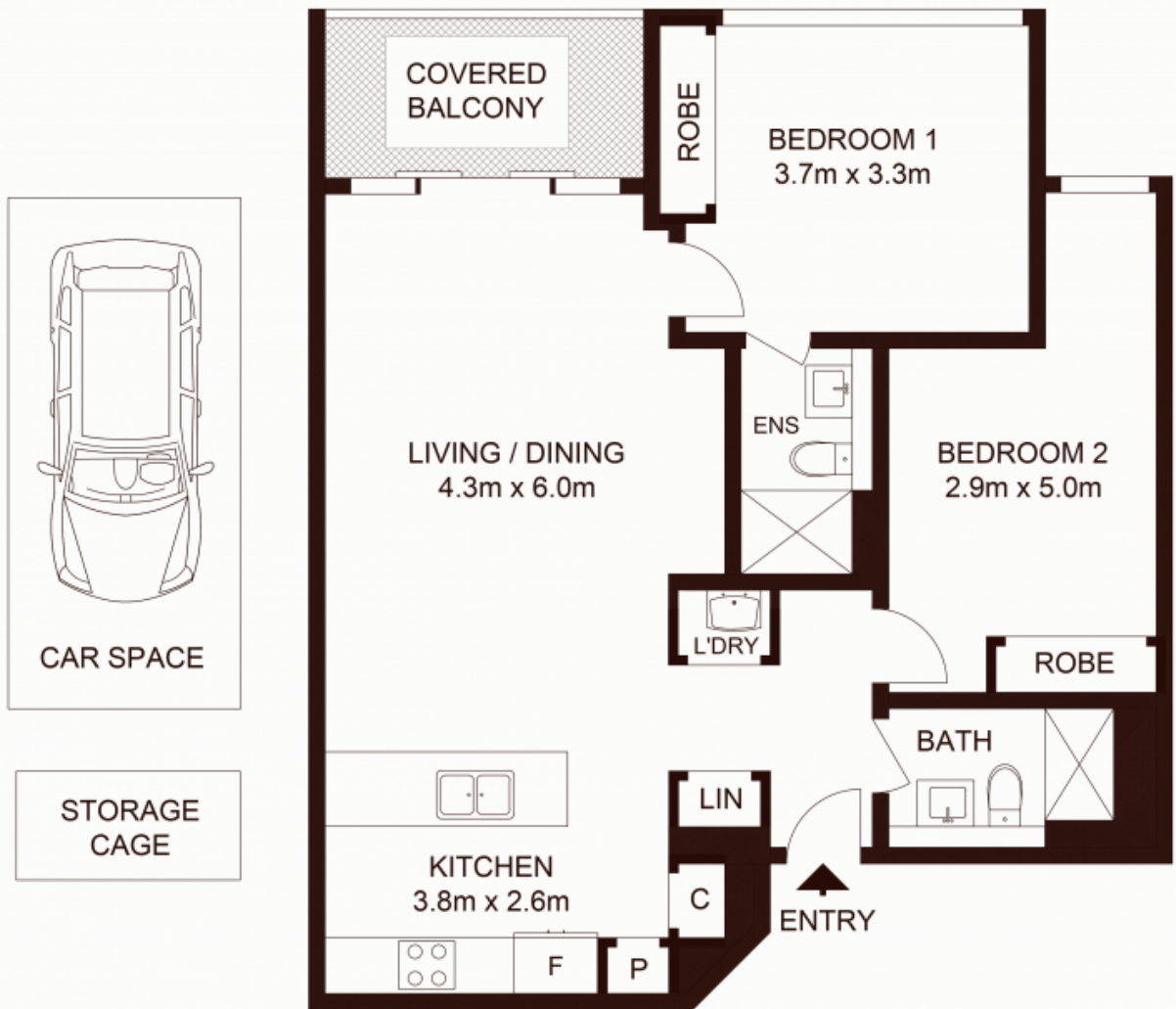
Contact Agent

Type : Apartment
Sold Date : Thursday, 11th April 2024

Council Rates : \$359.00 p/q
Water Rates : \$196.95 p/q
Strata Rates : \$1,375.40 p/q

Jeffrey Li
 0404 135 763

Faye Dai
 0423 677 160



LEVEL 22

TOTAL STRATA AREA : 100m²
 TOTAL LIVING AREA : 83m²

2207/486 Pacific Hallway, ST LEONARDS

Not to scale • All measurements are approximate • Drawn for marketing purposes only • Floorplan by © Xorix Media

