



1115/225 Pacific Highway North Sydney, NSW



Superbly sunlit apartment with elevated views in the heart of North Sydney

Embracing modern luxury and world-class facilities, 'Lucent' is considered to be one of North Sydney's most luxurious buildings, enjoying incredible lifestyle benefits through both location and resort-style facilities. This modern one bedroom plus extra study/media apartment perched on level 11, witnesses a stunning district view and provides a secure investment in this convenient and sought after location. Full access for residents only, to all amenities, including a rooftop swimming pool and gym.

Home Features:

- Open living/dining with floor to ceiling windows, flowing to covered balcony
- Queen-sized bedroom with built-in robes and balcony access

\$1,000,000

Type : Apartment
Sold Date : Monday, 20th February 2023
Land : 83 m2
Building Size : 83 m2

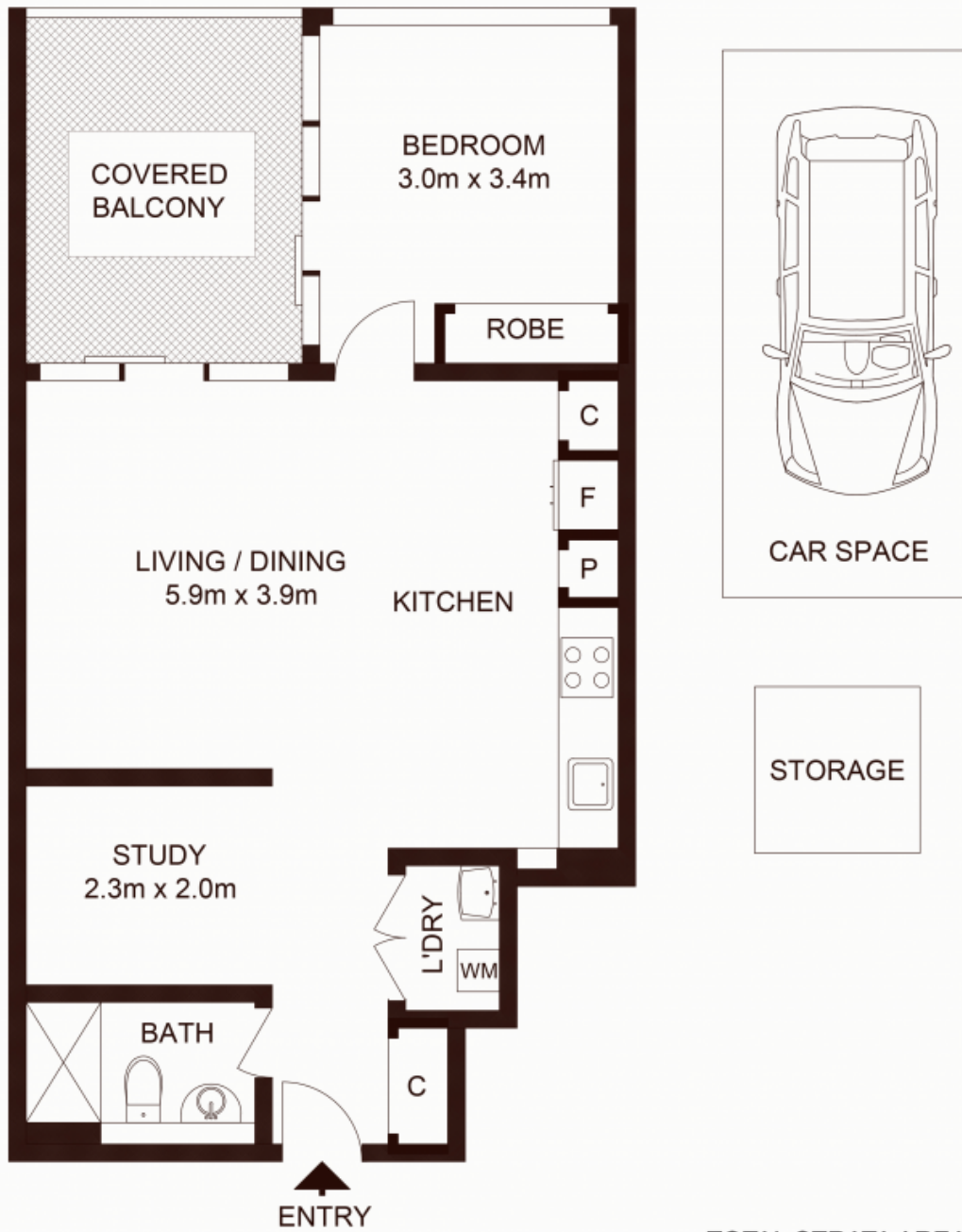
Council Rates : \$293.00 p/q
Water Rates : \$226.44 p/q
Strata Rates : \$978.87 p/q

Jeffrey Li

0404 135 763

Jeffrey Li

0404 135 763



TOTAL STRATA AREA : 83m²
 TOTAL LIVING AREA : 64m²

1115/225 Pacific Highway, NORTH SYDNEY

Not to scale • All measurements are approximate • Drawn for marketing purposes only • Floorplan by © Xorix Media

