



201/3 Hazlewood Place Epping, NSW

 2
  1
  1

## Stylish modern apartment in prime central precinct

Positioned on level two of this stylish modern complex 'Emerald Epping', this apartment boasts sunny north east aspect and an uninterrupted views from its large balcony. It's ideally located within walking distance to Epping shops, train station, eateries and elite schools. Perfect for first home buyers looking to take full benefit of the entire stamp duty fee.

### Home Features:

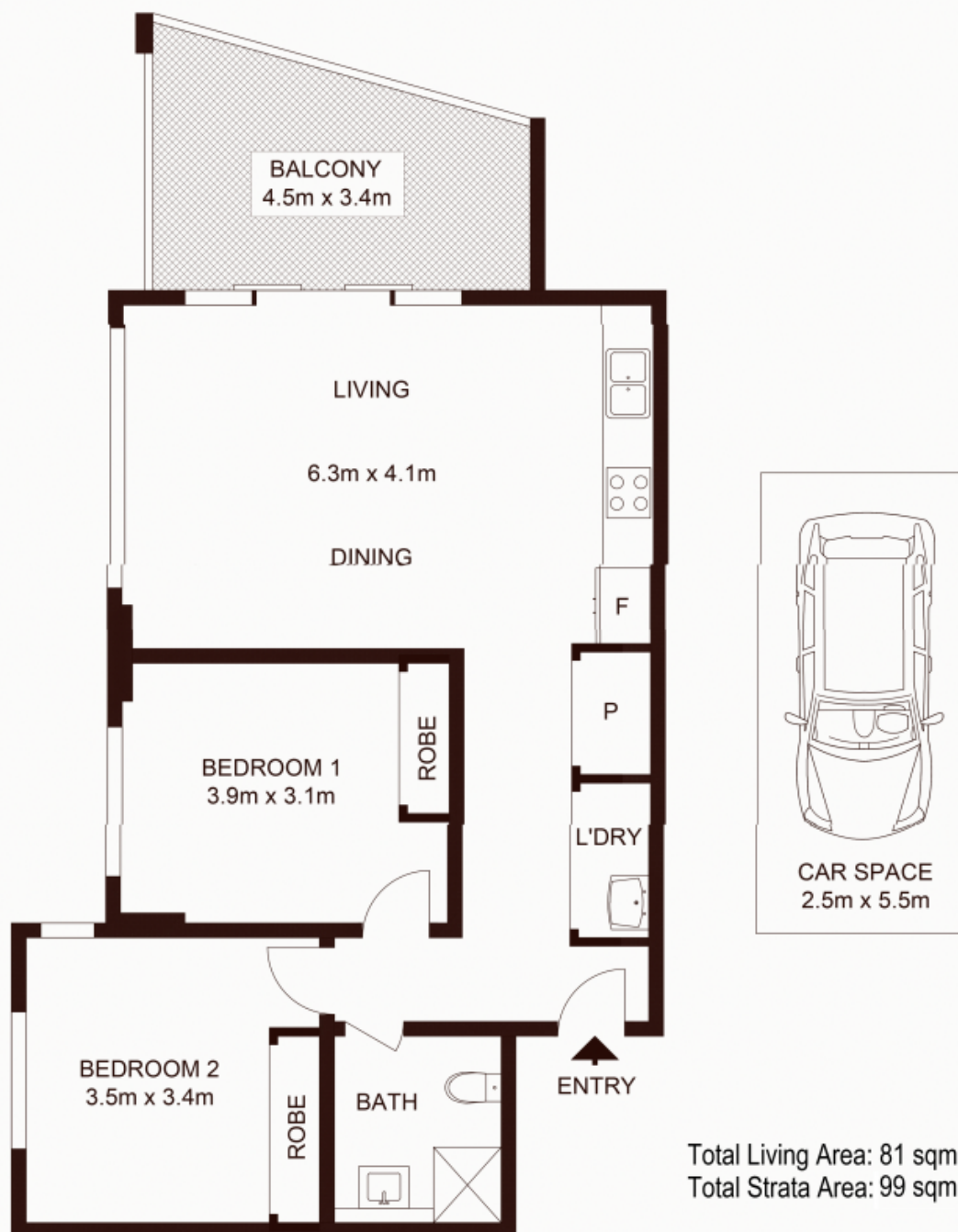
- Fresh modern interiors, high quality flooring and finishes
- Contemporary open plan living and dining area with split system air conditioner
- Stone kitchen benchtop and stainless-steel gas appliances
- Spacious bedroom with built-in wardrobe
- Internal laundry with dryer

**Type** : Apartment  
**Sold Date** : Wednesday, 16th November 2022  
**Land** : 99 m2  
**Building Size** : 99 m2

**Council Rates** : \$303.50 p/q  
**Water Rates** : \$236.20 p/q  
**Strata Rates** : \$606.10 p/q

**Jeffrey Li**

0404 135 763



## 201/3 Hazlewood Place, EPPING

Not to scale • All measurements are approximate • Drawn for marketing purposes only • Floorplan by © Xorix Media

