



1108/148 Elizabeth Street Sydney, NSW



1

## City studio with blue chip lifestyle appeal

A vibrant CBD location that provides quick and easy access to all the city's attractions means this versatile studio apartment delivers lifestyle in all directions. It features bright interiors, excellent security and offers a quality property with great rental income potential.

The well maintained 'Hyde Park Towers' complex also comes complete with onsite resort amenities and enjoys a prime position within a few short steps to Hyde Park, with Chinatown, Central station and the city centre just a stroll from the front door.

- An elevated eleventh floor position
- Entertainer's covered balcony
- Air-conditioned open design with lounge & dining areas
- Well-equipped gas kitchen presented in great condition

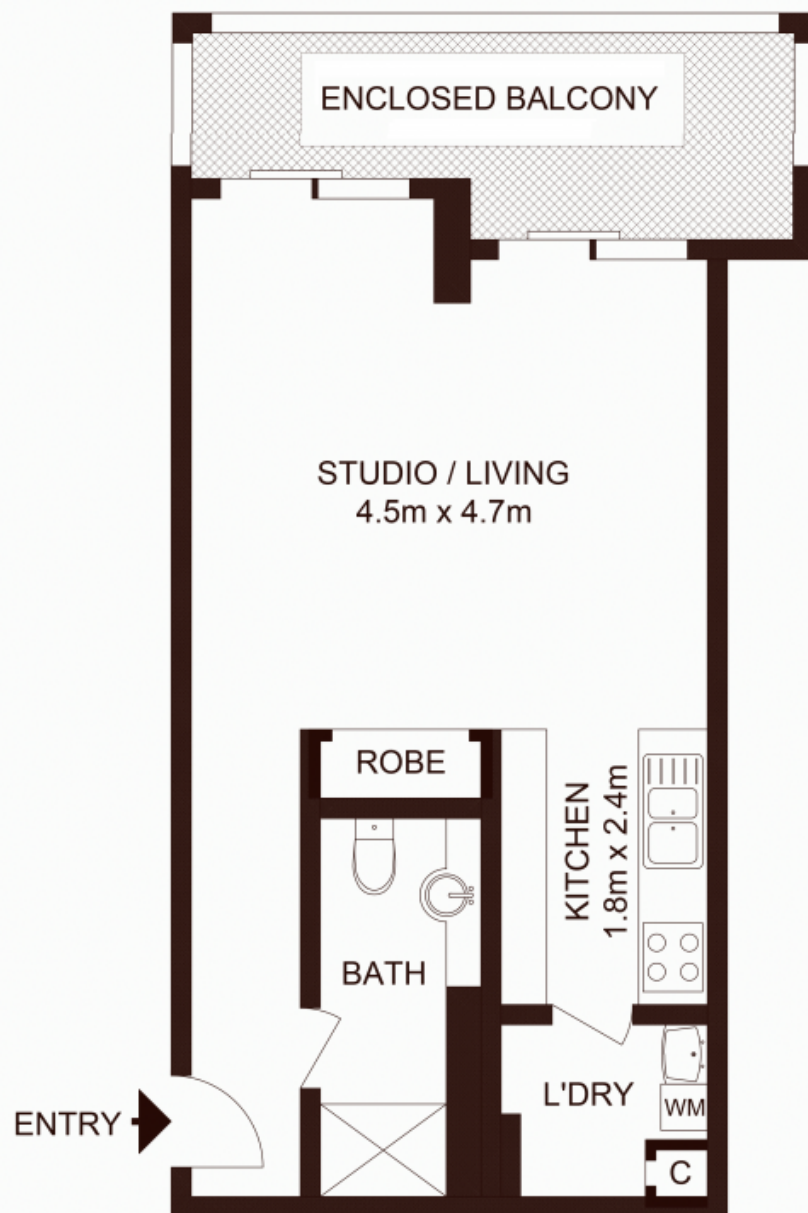
## contact agent

**Type** : Apartment  
**Sold Date** : Wednesday, 7th June 2023

**Council Rates** : \$245.70 p/q  
**Water Rates** : \$166.82 p/q  
**Strata Rates** : \$803.88 p/q

**Jeffrey Li**  
 0404 135 763

**Reika Morikawa**



LEVEL 11

Total strata area: 46 sqm

1108/148 Elizabeth Street, SYDNEY

Not to scale • All measurements are approximate • Drawn for marketing purposes only • Floorplan by © Xorix Media

