

809/500 Pacific Highway St Leonards, NSW



Luxury Apartment in Prestige Landmark - with upgrade extra

This near new apartment provides a unique living experience and is just footsteps from St Leonards Plaza and the new Crows Nest Metro. Set on level eight of the luxury 'Landmark' development, this home is flooded with natural light. It is a delightful entertainers' retreat or a place to relax in the sunshine.

Home Features:

- Open plan living and dining area with access to the balcony
- upgraded Herringbone timber floor throughout the apartment
- Upgraded marble kitchen bench including splashback
- Luxury Miele brand kitchen appliances, including built-in fridge
- upgraded smart lock access

\$1,150,000

Type : Apartment
Sold Date : Wednesday, 7th December 2022
Land : 94 m2
Building Size : 94 m2

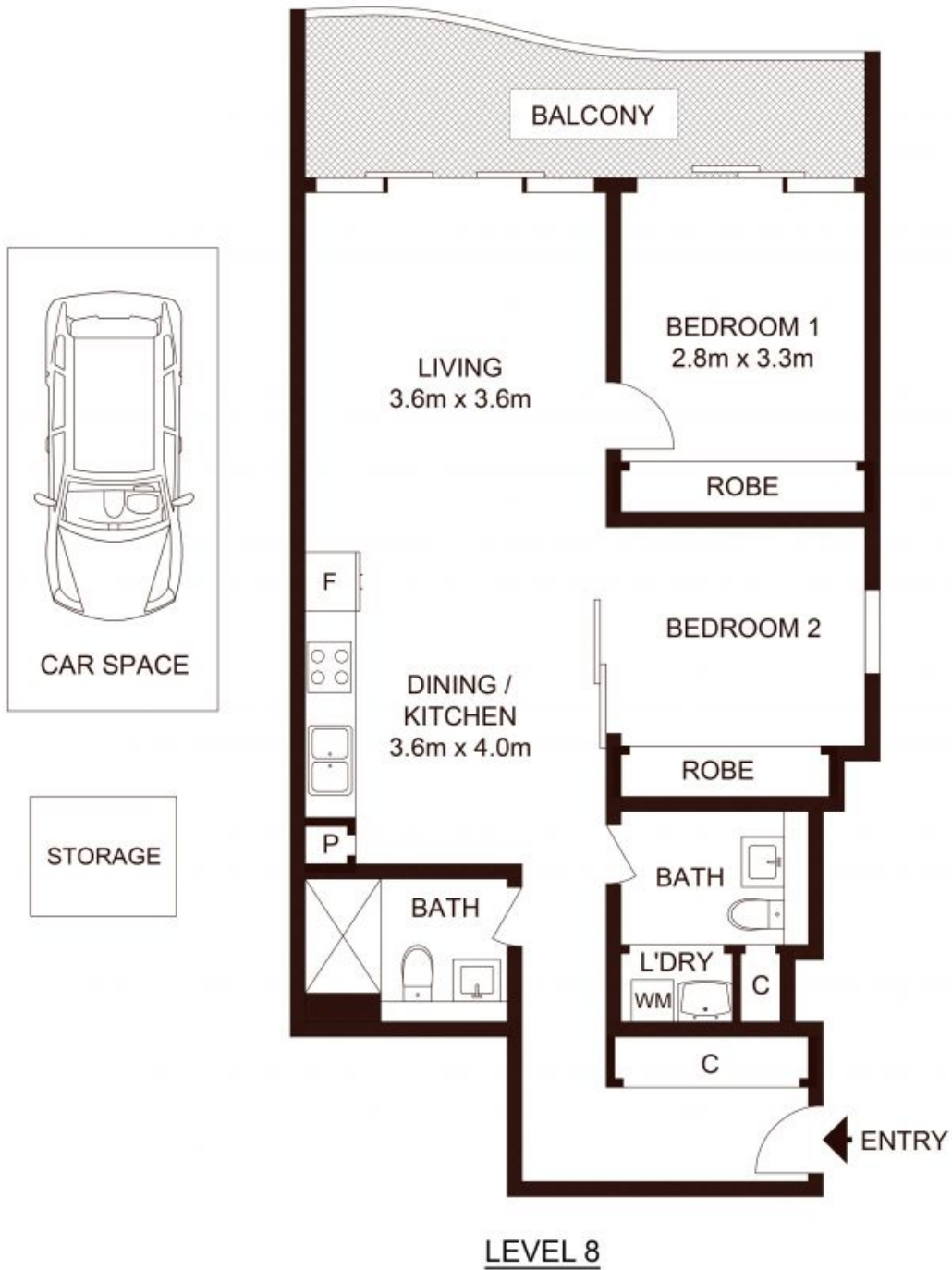
Council Rates : \$359.00 p/q
Water Rates : \$150.00 p/q
Strata Rates : \$1,292.65 p/q

Jeffrey Li

0404 135 763

Faye Dai

0423 677 160



TOTAL LIVING AREA : 78m²
 TOTAL STRATA AREA: 94m²

809/500 Pacific Highway, ST LEONARDS

Not to scale • All measurements are approximate • Drawn for marketing purposes only • Floorplan by © Xorix Media

