



3901/500 Pacific Highway St Leonards, NSW

 2
  2
  1

Luxury apartment with captivating northerly aspect

This newly built generously-sized two-bedroom apartment is situated on the 39th floor with open-plan living leading out onto a massive entertainer balcony, enjoying a spectacular sunrise and sunset view.

Home Features:

- Open plan living and dining area with access to balcony
- Wrap around balcony in perfect corner position overlooking beautiful district views of Sydney harbour
- Luxury Miele brand kitchen appliances including build-in fridge
- Two spacious north facing bedrooms with access to the wraparound balcony

\$1,849,700

Type : Apartment

Sold Date : Wednesday, 31st August 2022

Jeffrey Li

0404 135 763

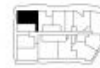


- F Fridge
- L Laundry
- P Pantry
- ST Storage
- W Wardrobe

Apartment Type	2 Bedrooms
Bathrooms	2
Internal	92 m ²
External	38 m ²
Parking	1

THE LANDMARK

Sculpted from Sydney



Two Bed Apartment Type A

Disclaimer: Colliers International does not guarantee, warrant or represent that the information contained in this advertising and marketing document is correct. Any interested parties should make their own enquiries as to the accuracy of this information. We exclude all implied or implied terms, conditions and warranties arising out of this document and any liability for loss or damage arising there from.