



907/9 Albany Street St Leonards, NSW

 2
  2
  1

Large North Facing Contemporary Stunner, Steps To Everything and the New Metro S

Discover a lifestyle of exceptional convenience and superb contemporary style with this light-infused 103sqm two-bedroom apartment that sits on the 9th floor of 'Metropolitan Residences'. Positioned on the Northeast corner with a due sunny north and east aspect, it showcases stream-lined functionality at its finest, adorned with a sensational array of high-quality finishes. The apartment is fresh and bright, enjoying an outlook over Naremburn and Crow's nest district.

Only a 2-minute walk to the new crow's nest metro station (opening 2023) and St Leonards Station, with the new St Leonards Plaza opening in 2022.

Home Features:

? Expansive north aspect entertaining balcony one of a kind within the building, perfect f

Auction

Type : Apartment
Sold Date : Saturday, 17th September 2022
Land : 119 m2
Building Size : 119 m2

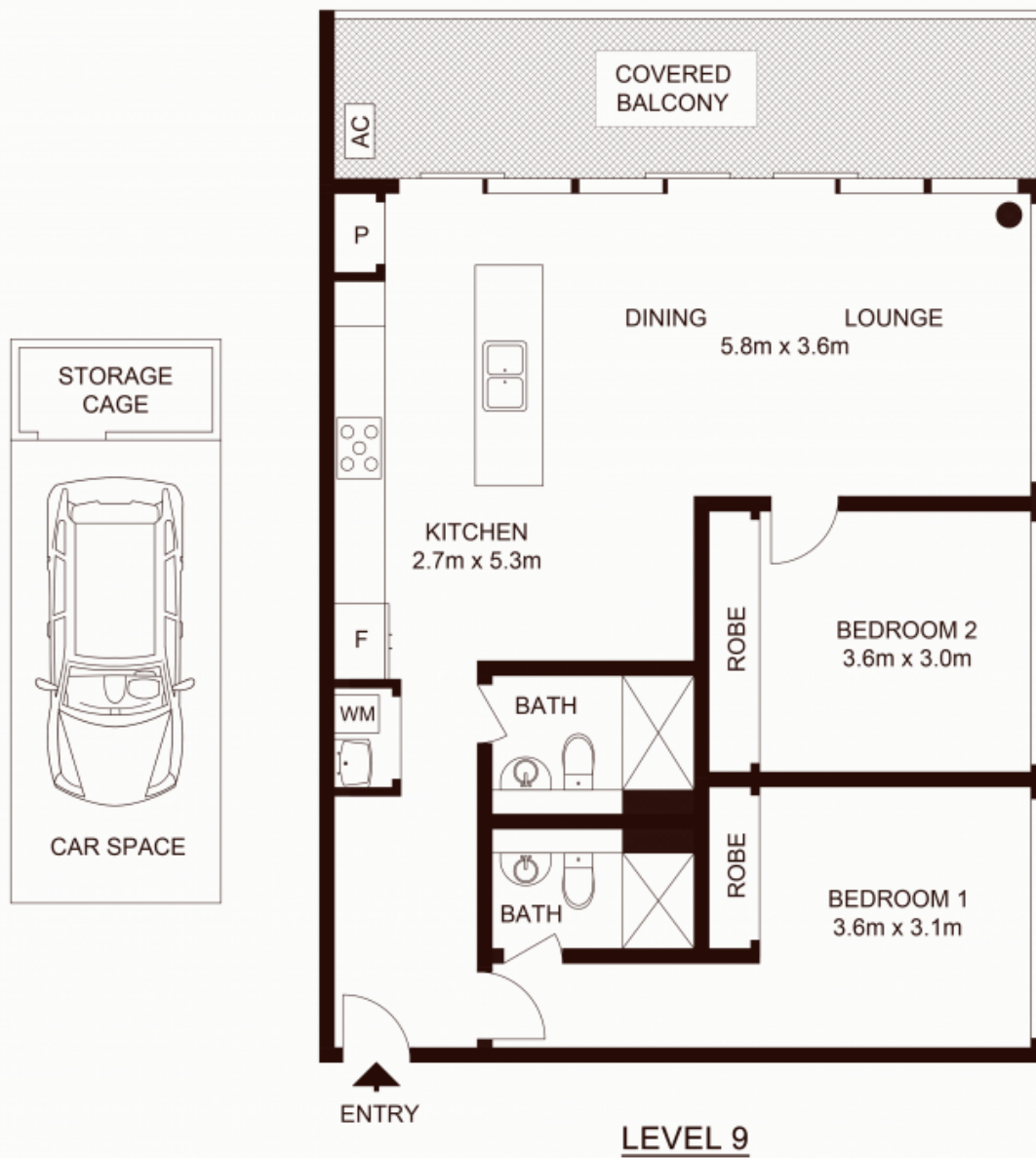
Council Rates : \$289.00 p/q
Water Rates : \$181.78 p/q
Strata Rates : \$1,186.90 p/q

Jeffrey Li

0404 135 763

Faye Dai

0423 677 160



TOTAL STRATA AREA: 119m²
TOTAL LIVING AREA : 103m²

907/9 Albany Street, ST LEONARDS

Not to scale • All measurements are approximate • Drawn for marketing purposes only • Floorplan by © Xorix Media