

328/1 Cliff Road Epping, NSW

 2  
  2  
  1

## Stylish Two Bedroom in the Heart of EPPING

Near New two bedroom apartment Located in the heart of Epping, only minutes walk to Station. The apartment provides an idyllic sanctuary of style, space and quality. A few mins walking distance to train station & bus stop and school, mins Walking to Shops, Cafe and Coles Supermarket.

Expertly designed to maximise natural light, it reveals fluid lounge/dining extending to an entertainer's balcony.

- Prime location walking to all amenities
- Gas Cooking Gourmet Kitchen with stone bench top, stainless steel appliances
- Light filled bedroom with built-in wardrobes
- Combined living and dining area
- Floorboards
- Air conditioning
- Security Car space and intercom

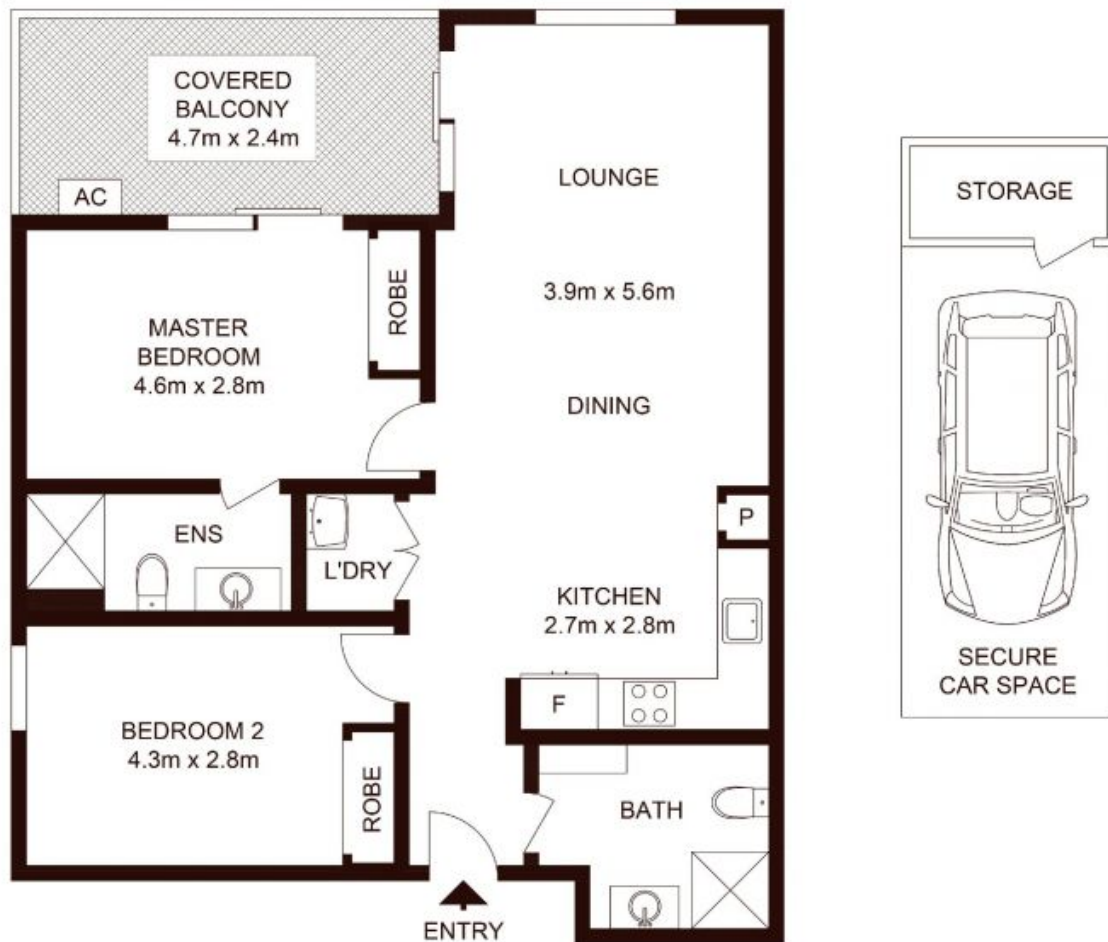
## Contact Agent

**Type** : Unit  
**Sold Date** : Monday, 2nd August 2021  
**Building Size** : 103 m2

**Council Rates** : \$285.90 p/q  
**Water Rates** : \$151.89 p/q  
**Strata Rates** : \$1,469.44 p/q

**Tiffany Or**  
 0455582288

**Jeffrey Li**  
 0404 135 763



## 328/1 Cliff Road, EPPING

Not to scale • All measurements are approximate • Drawn for marketing purposes only • Floorplan by © Xorix Media

