



2606/486 Pacific Highway St Leonards, NSW

3 2 1

### Harbour Bridge View + Water View + Views all the way to the mountains

Functional & distinct layout for a 3-bedroom in the Jackson Mirvac

St. Leonards Square exemplifies Mirvac's reputation for sophisticated living in Sydney with superb amenity, exceptional city views, and a vibrant ground floor plaza.

Set in the heart of St Leonards, this home is just five kilometers from Sydney CBD.

Apartment Features:

\* Internal laundry with dryer included

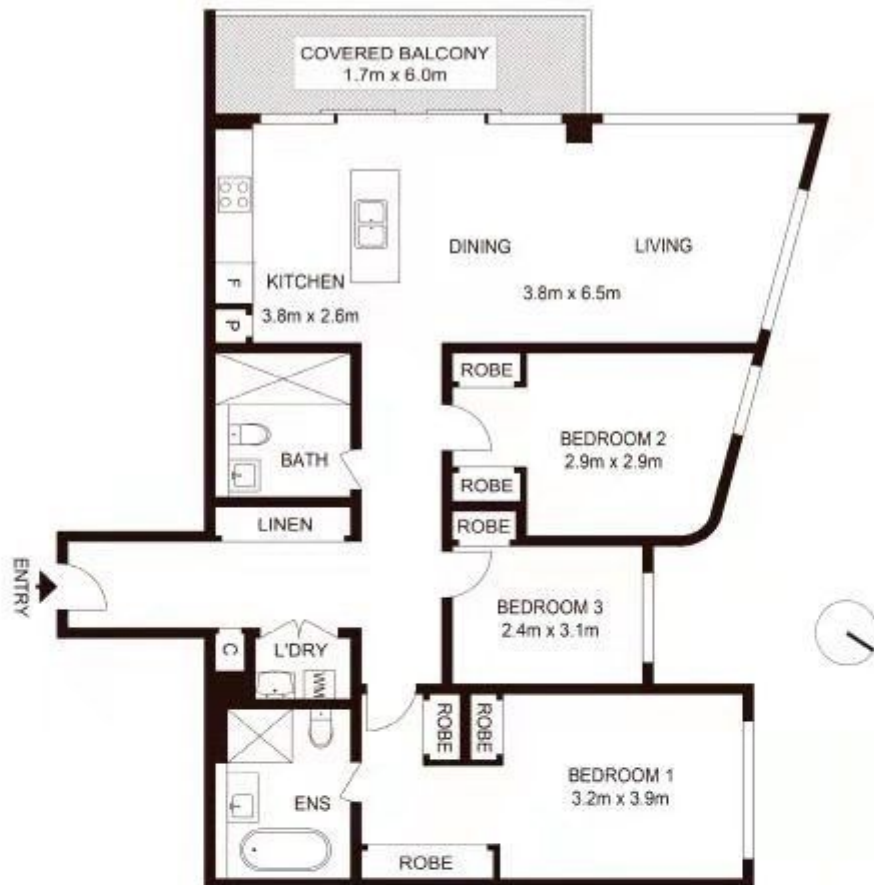
### Contact Agent

**Inspect** : Saturday, 15th May 2021 12:00 - 12:30  
**Type** : Apartment

**Council Rates** : \$1,030.88/year (approx)  
**Water Rates** : \$147.31 p/q  
**Strata Rates** : \$2,145.00 p/q

**Jeffrey Li**  
 0404 135 763

**Teresa So**  
 0430 008 121



2606/486 Pacific Highway, ST LEONARDS

Not to scale · All measurements are approximate · Drawn for marketing purposes only · Floorplan by © Xarix Media