



Level 3/2 Oliver Road Chatswood, NSW



## Luxury 2-Bedroom Apartment in Meridian Chatswood

Type : Apartment

Conveniently positioned in Chatswood, this luxury apartment offers comfortable living in Lower North Shore. Moment to the heart of Chatswood, this security apartment is a streamlined retreat with elevated outlooks and high-quality finishing throughout. This distinctive apartment showcases the beauty of the exceptional design. It is within the catchment for Chatswood High and Public School.

- \* Spacious light-filled living and dining room opening out onto the balcony
- \* Gourmet open plan kitchen with sleek Caesar Stone benchtop
- \* Security building with lift access and intercom system
- \* 5 mins stroll to Chatswood Interchange & Chatswood Westfield
- \* 2 mins walk to Chatswood Public School & approx 20 minutes drive to the city
- \* Moments from the parklands, Chatswood Oval, and Chatswood Golf Club
- \* Rapid access to the CBD

**Jeffrey Li**  
 0404 135 763

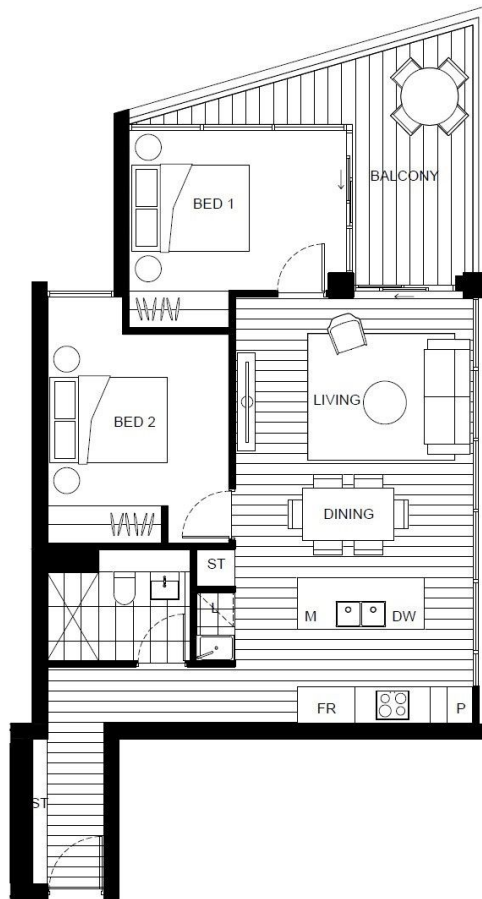
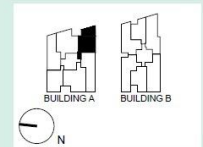
**Faye Dai**  
 0423 677 160



**2 BEDROOM  
LEVEL 2, 3, 5  
APARTMENTS**

A 2.01, A 3.01, A 5.01

<b>INTERNAL</b>	70 m <sup>2</sup>
<b>BALCONY</b>	11 m <sup>2</sup>
<b>TOTAL</b>	81 m <sup>2</sup>



Disclaimer: Please note that the layout plan was produced prior to construction. The information is believed to be correct but is not guaranteed. Changes may be made during construction and dimensions, areas, fittings, finishes and specification are subject to change without notice in accordance with the provisions of the contract for sale. The furniture and furnishings depicted are not included with any sale and purchasers must refer to their contract for sale for the list of inclusions. The position of the furniture and furnishings should not be taken to be indicative of final positions of power points, tv connection points and the like. Prospective purchasers must rely on their own enquiries. All graphics including the layout and balustrades and the like are indicative only. Balustrades for services are not depicted. The layout plan is at an unspecified scale.