



1607/81 Harbour Street Sydney, NSW

2 2 1

## North East Two Bedroom With Magnificent City Views

Prime opportunity to be a part of Darling Square, this North East facing two bedroom residence is located on level 16 with panoramic City views.

This apartment exudes only the highest levels of craftsmanship and the sharpest contemporary edge. Its distinctive character and architectural brilliance accompanied by beautiful water views of Darling Harbour create a perfect articulation of modern living.

- North East Aspect with magnificent city view.
- Gas kitchen with Miele appliances and stone benchtops
- Master bedroom with built ins and ensuite
- High Level with huge study room
- Expansive 2600sqm residents deck that features a heated swimming pool, barbecue facilities

**Inspect** : Saturday, 15th May 2021 11:15 - 11:45  
**Type** : Apartment

**Council Rates** : \$295.36 p/q  
**Water Rates** : \$183.24 p/q  
**Strata Rates** : \$1,954.81 p/q

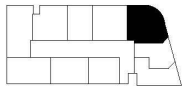
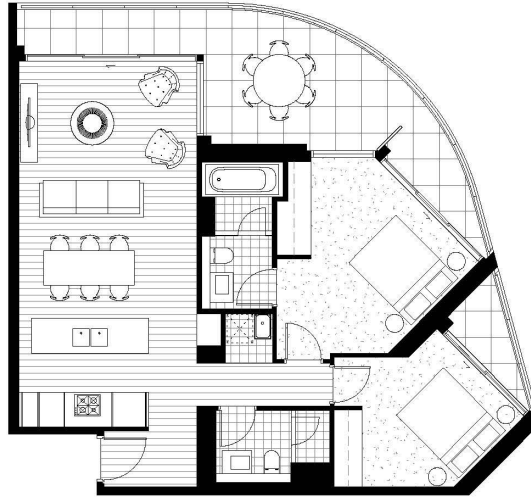
**Jeffrey Li**  
 0404 135 763

**Charles Leung**  
 0415 933 992

APARTMENT TYPE REFERENCE	
APARTMENT TYPE	E
APARTMENT NO.	0E-37E

BEDROOMS	2
APARTMENT AREA	81 m <sup>2</sup>
BALCONY AREA	22 m <sup>2</sup>
TOTAL APARTMENT AREA	103 m <sup>2</sup>

This plan is an indication floor plan only, as at April 2015. This plan is a guide only and does not constitute an offer or a contract, and is subject to completion with all laws and regulations applicable to the relevant authorities. All areas, diagrams, dimensions and specifications shown are approximate only and are subject to change in compliance of construction. All details are subject to change without notice. Prospective purchasers are encouraged to make their own assessments and seek their own professional advice.



**DARLING SQ.**  
SYDNEY

