



B107/105-115 Portman Street Zetland, NSW

2 1 1

## North Facing 2 Bedroom Apartment short stroll from Green Square Station

Situated in the heart of Green Square is UNO residences. A place for you to live, work and play in the midst of Sydney's thriving new neighbourhood, at UNO you'll experience a lifestyle of comfort and convenience.

Designed by award winning architects, SJB, your new apartment at UNO is your private sanctuary. Sharp horizontal and vertical design elements add privacy and visual interest, whilst optimising natural light.

Living area flows to a covered balcony and features floor to ceiling glass windows with an adjustable screen - perfect for entertainment

Bathrooms with shelving and mirrored cabinetry to provide ample storage

Estimated construction to be complete in mid-2019

Fast and easy transport throughout the rest of Sydney, including its beautiful eastern suburbs

Contact Jeffrey Li

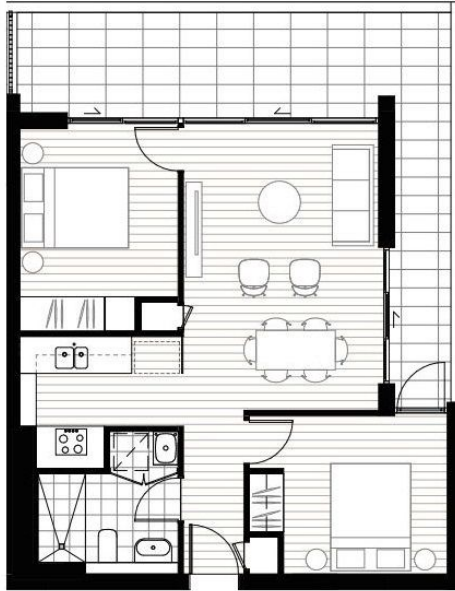
Type : Apartment

**Jeffrey Li**  
0404 135 763

**Charles Leung**  
0415 933 992



Contact Jeffrey Li 0404 135 763



BUILDING B  
APARTMENT B.107

2 BEDROOM

Internal Area: 61 m<sup>2</sup>  
External Area: 22 m<sup>2</sup>  
Total: 83 m<sup>2</sup>

